

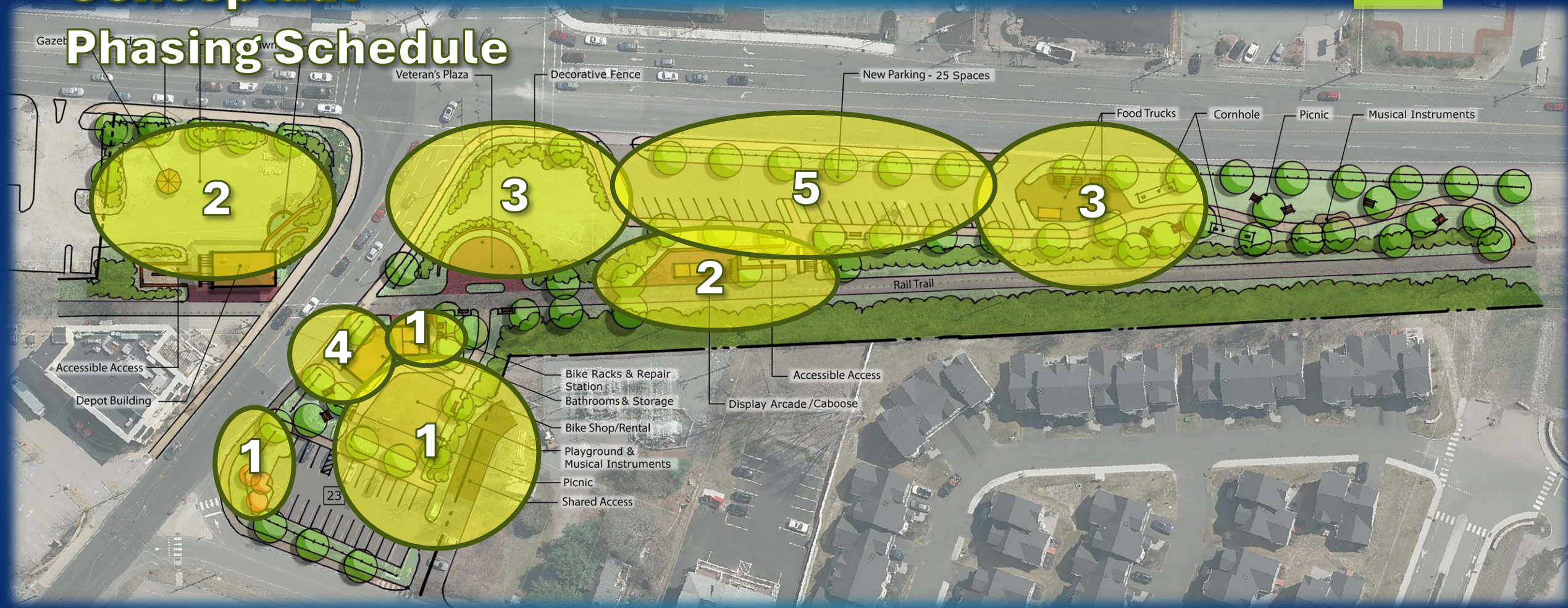


Draft Funding / Phasing Plan – Depot Village Master Plan

CRAYTON BRUBAKER, COMMUNITY DEVELOPMENT
PROGRAM MANAGER

RECOMMENDED BY DVAC 10/15/25

Conceptual Phasing Schedule



2028 – 2030

Phase 3 – Parcels along NH 28

- ▶ Late 2028 – LWCF grant application submission
- ▶ 2029 – funding, design, permitting, waiting for state and fed approvals
- ▶ 2030 – construction
- ▶ Food truck and picnic area (\$461,941)
- ▶ Screening vegetation (\$156,691)
- ▶ Landscape in front of veteran's plaza (\$96,130)
- ▶ Misc from accessible ramp, stairs walkway (decorative fence and lighting included; parking not included) (\$262,250)
- ▶ 5, 8, 2, and portion of 3 on OPC
- ▶ **Est. Total Cost: \$977,012 TOTAL**
 - ▶ \$488,506 LWCF grant \$100k rec impact fees
 - ▶ \$125k community donations (landscape and vegetation (Con Com fund?))
 - ▶ \$263,506 tax levy / bond



2031

-

2032

-
- 0 100 Feet
- Labels in the plan include:
- Accessible Areas
 - Blue Bikes & Repair Station
 - Ball Field
 - Food Trucks
 - Combs
 - Picnic
 - Musical Instruments
 - Fruit Trees
 - Near Parking 23 Spaces
 - Walking Path
 - Water Feature
 - Plantings
 - Event Lawn
 - Garden
 - Landscape