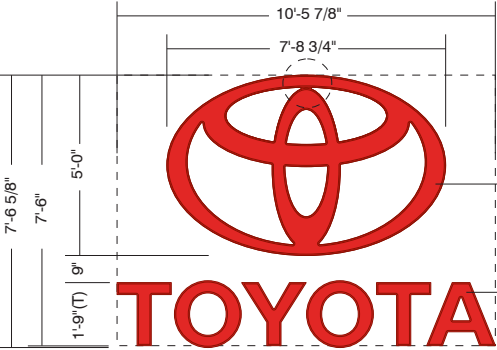


OPTION 5



Toyota Brand  
Overall Perimeter  
7'-6" x 10'-5 7/8"  
78.67 SQ. FT.

30.35 SQ. FT.

18.35 SQ. FT.  
Toyota Brand Elements  
48.70 SQ. FT.

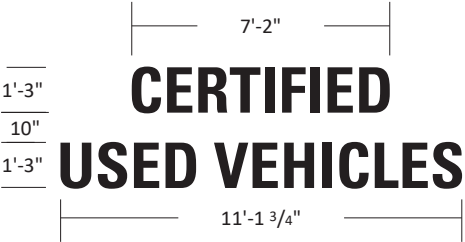
SL60

Illuminated Logo & Letters

- panned & embossed clamshell trim
- lexan polycarbonate: Bayer Red D99
- aluminum coil pre-painted red
- 3M 3635-20B block out vinyl applied second surface
- illuminated with red LED
- electrical hook-up supplied by others



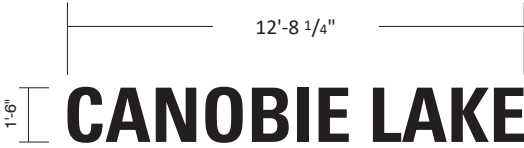
inside view  
block-out vinyl area



SI-15

Illuminated Channel Letters

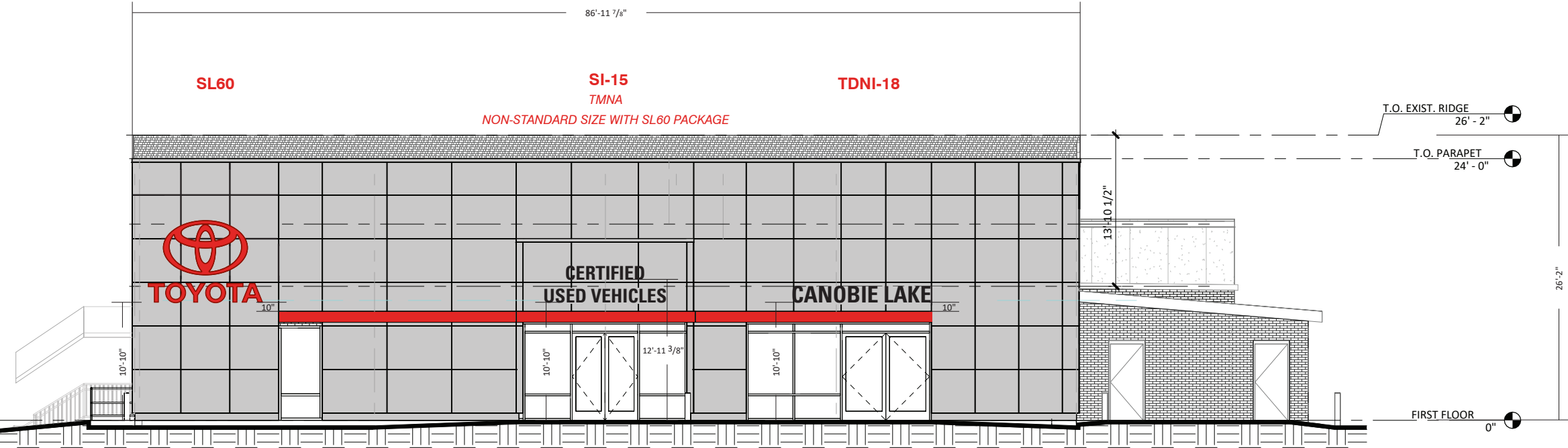
- aluminum cabinets black
- f-trim retainers black
- 3/16" white pigmented acrylic faces #2447
- 3M 3635-222 black perforated vinyl applied first surface
- illuminated with white LED
- electrical hook-up supplied by others



TDNI-18

Illuminated Channel Letters

- aluminum cabinets black
- f-trim retainers black
- 3/16" white pigmented acrylic faces #2447
- 3M 3635-222 black perforated vinyl applied first surface
- illuminated with white LED
- electrical hook-up supplied by others



WEST ELEVATION

DocuSigned by:

DAVID ROSENBERG

D776C4A76AA4436

DAVID ROSENBERG

DocuSign ID

LM2-63992

28041

Canobie Lake Toyota  
412 S. Broadway  
Salem, NH

Sign Item

Date: 21-JAN-2025  
Scale: 3/16"=1'-0"  
Contact: L.Milligan  
Designer: C.Sabatino

Revision Note

Information Required  
for Production

Customer Approval

Signature

MM/DD/YYYY

All rights reserved. The artwork depicted herein are copyrighted and are the exclusive property of Pattison ID and as such cannot be reproduced and/or distributed, in whole or in part, without written permission of Pattison ID.

It is the Customer's responsibility to ensure that the sign installation location is suitable to accept and support the installation of the signs being ordered. Notify Pattison ID immediately if further details are required.

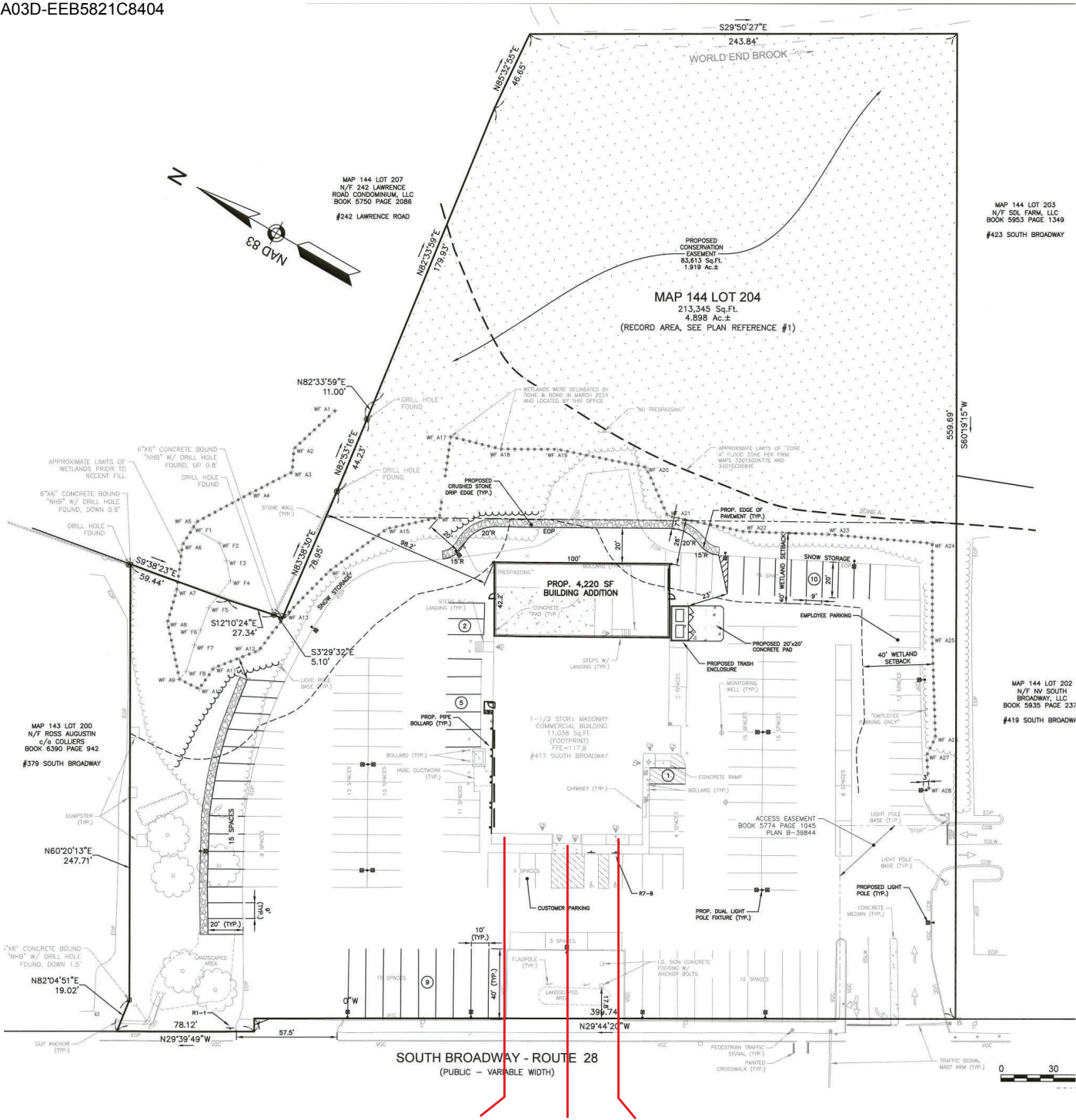
Pattison



1.866.635.1110  
pattisonid.com

DocuSigned by:  
**DAVID ROSENBERG**  
D776C4A76AA4436  
DAVID ROSENBERG

3/24/2025



Project ID  
**LM2-63992**

28041  
Canobie Lake Toyota  
412 S. Broadway  
Salem, NH  
Sign Item

Date: 21-JAN-2025  
Scale: N.T.S.  
Contact: L.Milligan  
Designer: C.Sabatino

Revision Note

Information Required  
for Production

Customer Approval

Signature  
MM/DD/YYYY

All rights reserved. The artwork depicted herein are copyrighted and are the exclusive property of Pattison ID and as such cannot be reproduced and/or distributed, in whole or in part, without written permission of Pattison ID.

It is the Customer's responsibility to ensure that the sign installation location is suitable to accept and support the installation of the signs being ordered. Notify Pattison ID immediately if further details are required.