

SALEM MUNICIPAL SERVICES

ENGINEERING ♦ PUBLIC WORKS ♦ UTILITIES



PINE GROVE CEMETERY



PINE GROVE CEMETERY

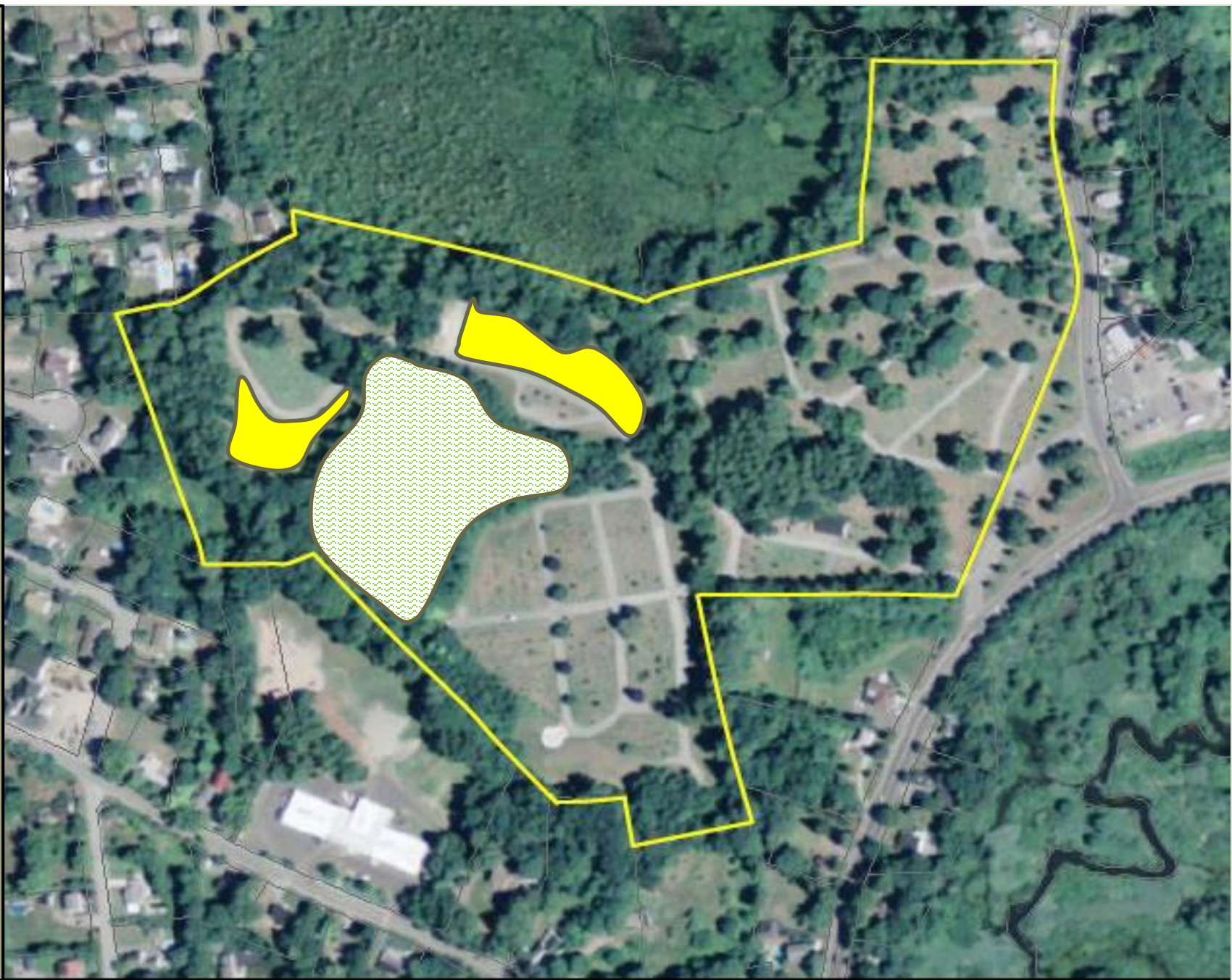
- Largest Cemetery
- 23 Acres
- 2015
 - 45 Burials
 - 46 Cremations
- 2016
 - 38 Burials
 - 18 Cremations
- 320 Remaining Plots?

CONSIDERATIONS



Capacity Issues
Inefficient Mapping
Index Card Records
Layout
Capital Improvements
Technology

EXPANSION



EXPANSION





- New Graves
- X Plots Available
- No Formal Layout
- Plot
 - 1 Full Burial
 - 3 Cremations
 - No Pre-Sales
 - 4 Plots
 - \$400
- Cost of Burial
 - Full - \$500
 - Cremation - \$75
 - \$200 ExtraWeekends/Holidays





- 2 plus acres
- Ledge issues
- Cremation Garden
- Columbarium
 - Upright Structure
 - Granite
 - Niches
 - Pre-Sales
 - Cost
- Designed
- Phased

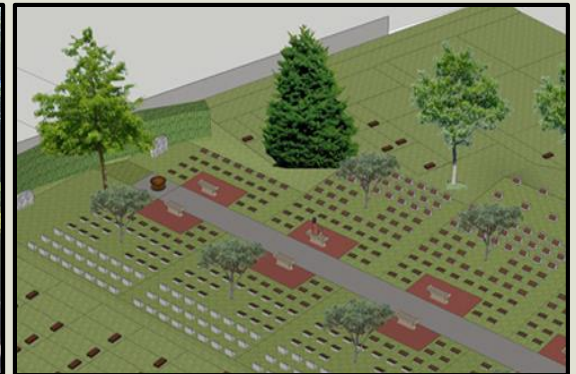
CREMATION GARDEN



CREMATION SECTION



- Lower half of 2 acre section
- Grade could be raised with wall by road
- Uniformity
- Efficiency



MASTER PLAN

- Cemeteries run out of space due to no planning and become a combination of various add on sections
- Identify build out locations and survey, map, and plan to maximize space
- Identify expansion feasibility and prioritize
- Sustain and document digitally the existing inventory and layout of cemetery graves
- Create a formal CIP
- Analyze current costs and fees for sustainability
- Purchase software that will manage the plots
- Conservation and restoration of old sections

DISCUSSION

