



SALEM MUNICIPAL SERVICES

ENGINEERING ♦ PUBLIC WORKS ♦ UTILITIES

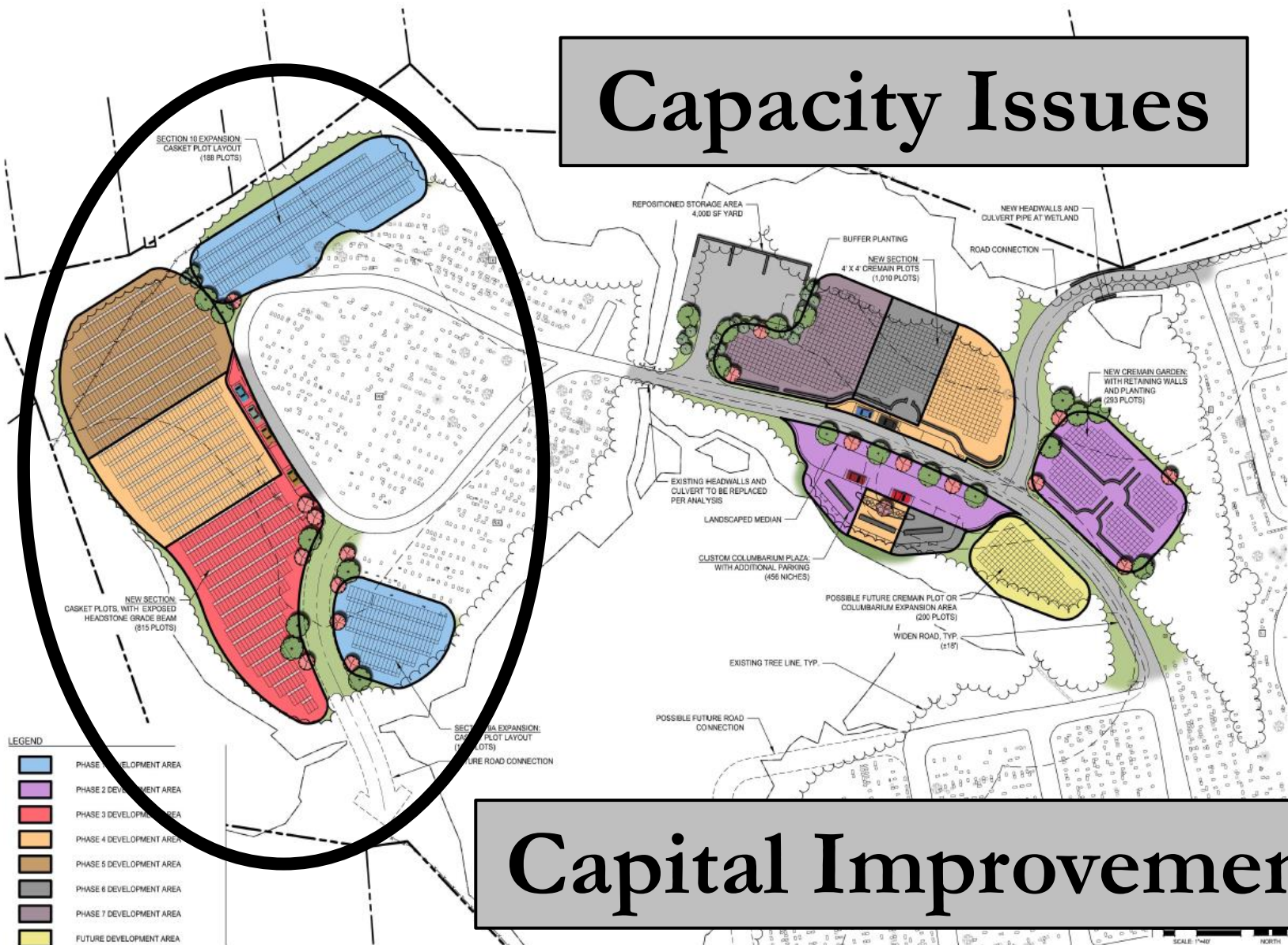
PINE GROVE CEMETERY UPDATE
JULY 17, 2019

CONSIDERATIONS

Capacity Issues
Inefficient Mapping
Index Card Records
Layout
Capital Improvements
Technology

Capacity Issues

Capital Improvements



The LA GROUP
 Landscape Architecture & Engineering P.C.
 People. Purpose. Place.
 40 Long Alley, Suite 200
 Saratoga Springs, NY 12856
 P: 518-587-8900
 F: 518-587-0300
 www.thelagroup.com

Unauthorized alteration or addition to this document is a violation of Section 1708 of the New York State Education Law.

© The LA Group 2018

Prepared for:
Town of Salem, NH
 Salem Town Hall
 23 Genesee Drive
 Salem, NH 03079

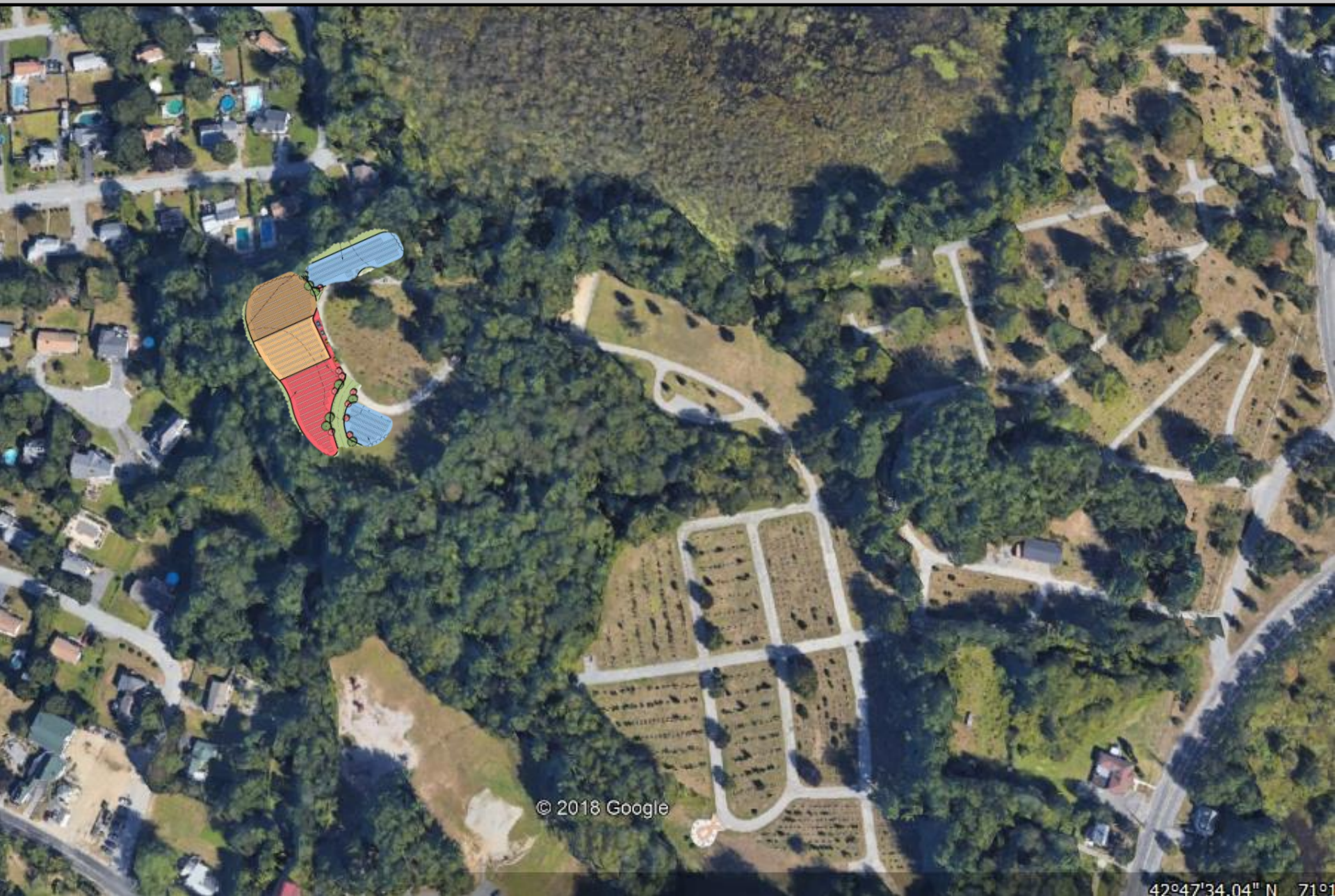
Project Title:
Pine Grove Cemetery Master Plan

329 Main Street
 Salem, NH 03079

Project No.	2018055
Design	DESIGN
Drawn	JES
Checked	CHS
Scale	1" = 40'
Description	Date

SCALE: 1"=40' NORTH

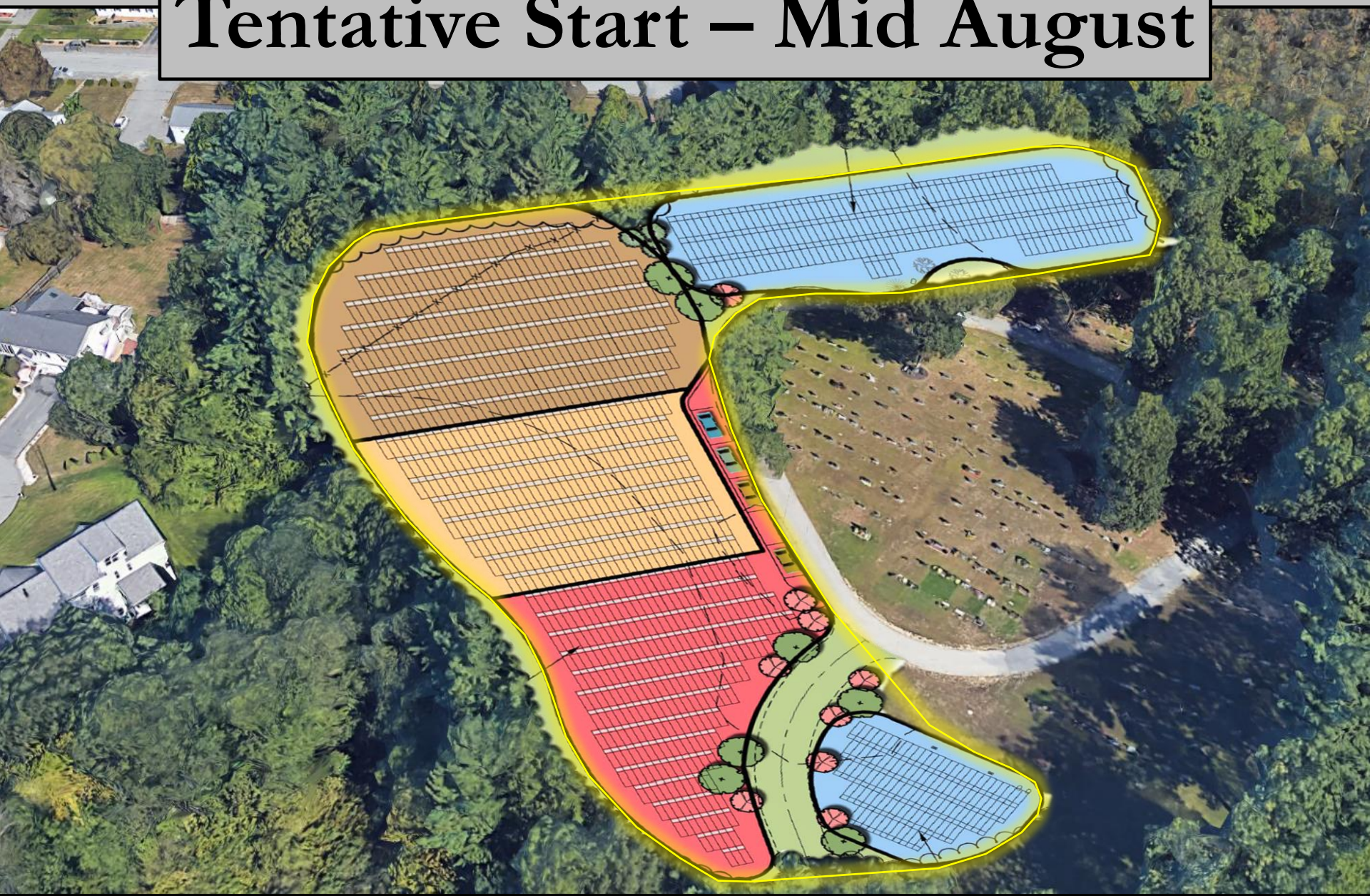




© 2018 Google

42°47'34.04" N 71°1

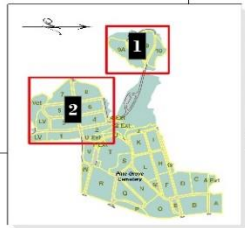
Tentative Start – Mid August



Mapping Records Technology

- Extensive field review to take notes and measurements to support translation of paper records to real space. Existing paper maps were complete but not to scale and could not be converted – primary use was to establish plot names/IDs
- Layout was translated to drone imagery and polygons representing burial plots were laid out. Plots follow a measured system and are highly accurate with ground conditions. A Section-Row-Plot-Grave naming convention was applied to each plot.
- Summer help used to scan, enter select information, and geolocate each burial card. From May to June over 2,000+ cards were entered into a database.
- Computers installed at Cemetery Office

Plan of
Pine Grove
Cemetery
Salem, NH
Spring, 2019



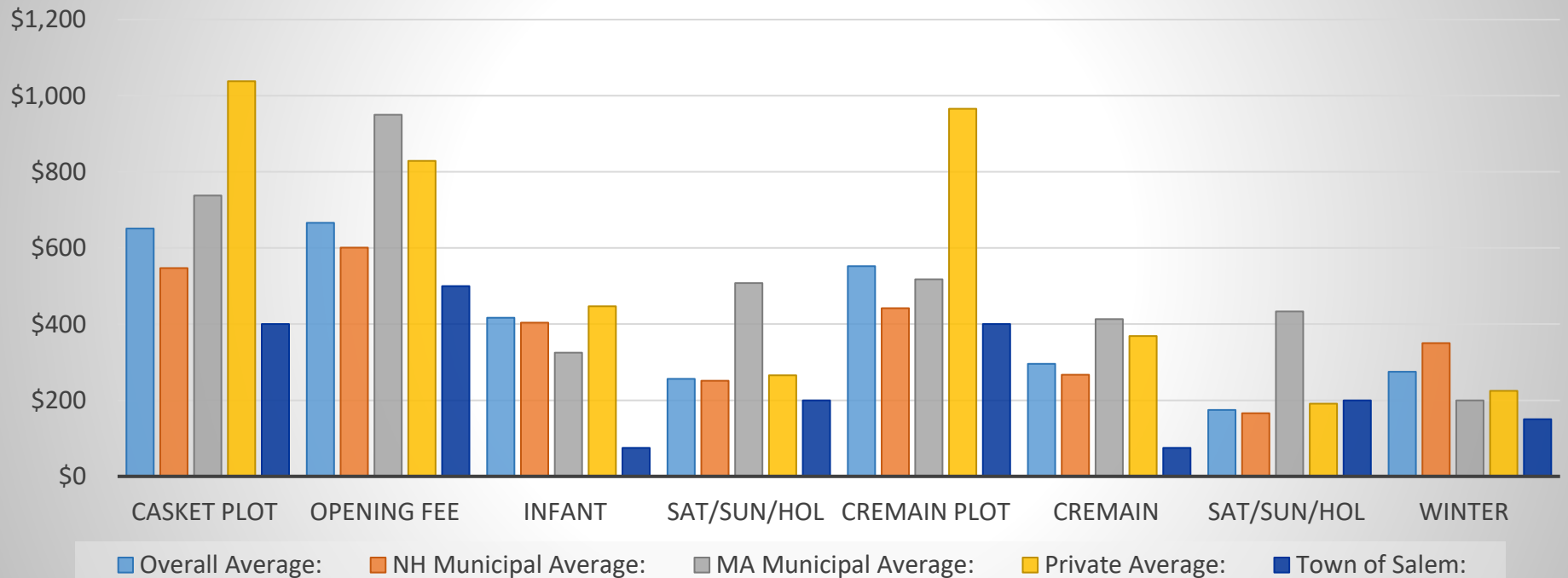
Mapping Records Technology

- Extensive field review to take notes and measurements to support translation of paper records to real space. Existing paper maps were complete but not to scale and could not be converted – primary use was to establish plot names/IDs
- Layout was translated to drone imagery and polygons representing burial plots were laid out. Plots follow a measured system and are highly accurate with ground conditions. A Section-Row-Plot-Grave naming convention was applied to each plot.
- Summer help used to scan, enter select information, and geolocate each burial card. From May to June over 2,000+ cards were entered into a database.
- Computers installed at Cemetery Office

Considerations

- Establishing comprehensive formal rules and regulations to be adopted by BOS
- New Fee Schedule

CEMETERY FEES



SALEM MUNICIPAL SERVICES



ENGINEERING ♦ PUBLIC WORKS ♦ UTILITIES

DISCUSSION

JULY 17, 2019