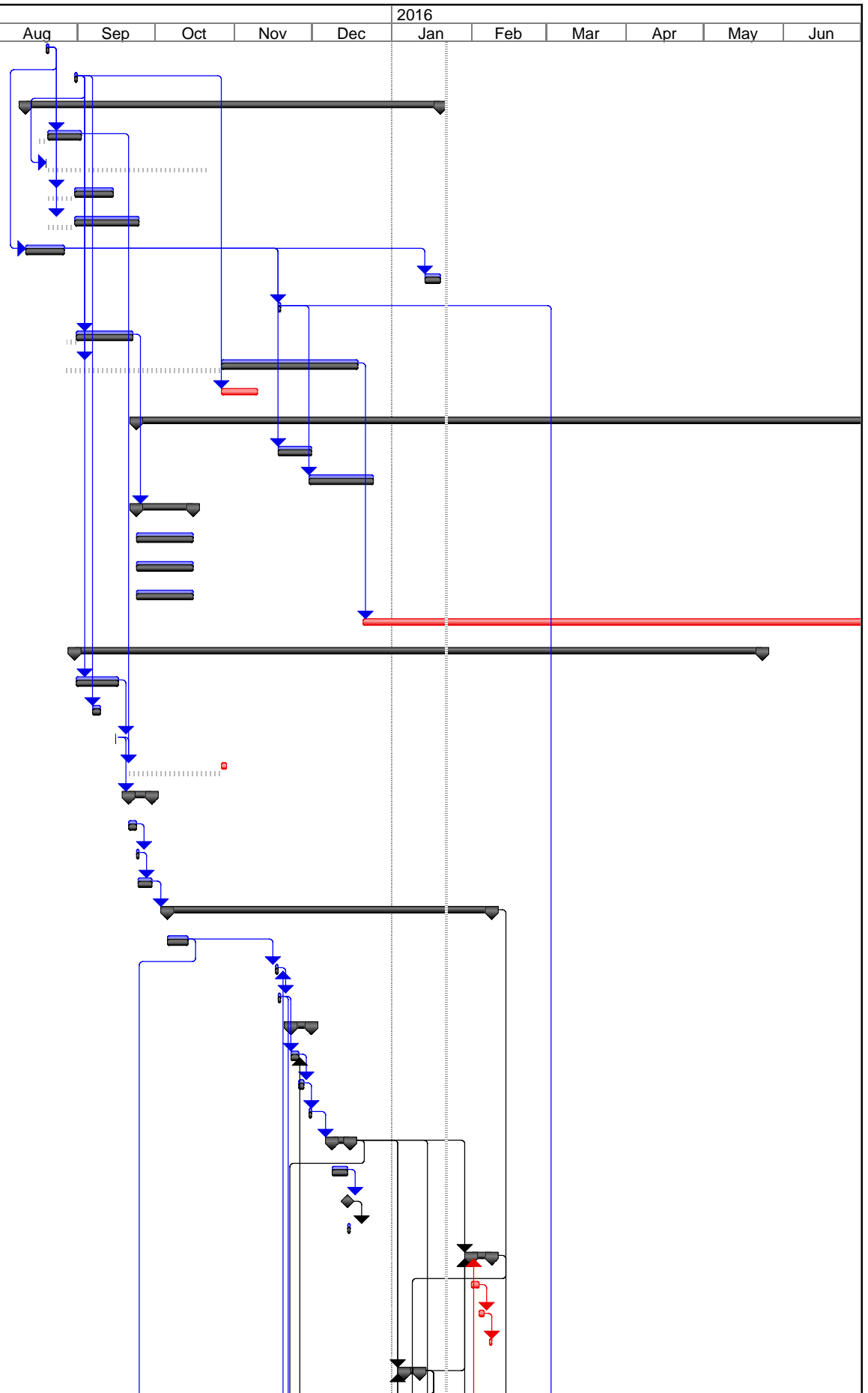
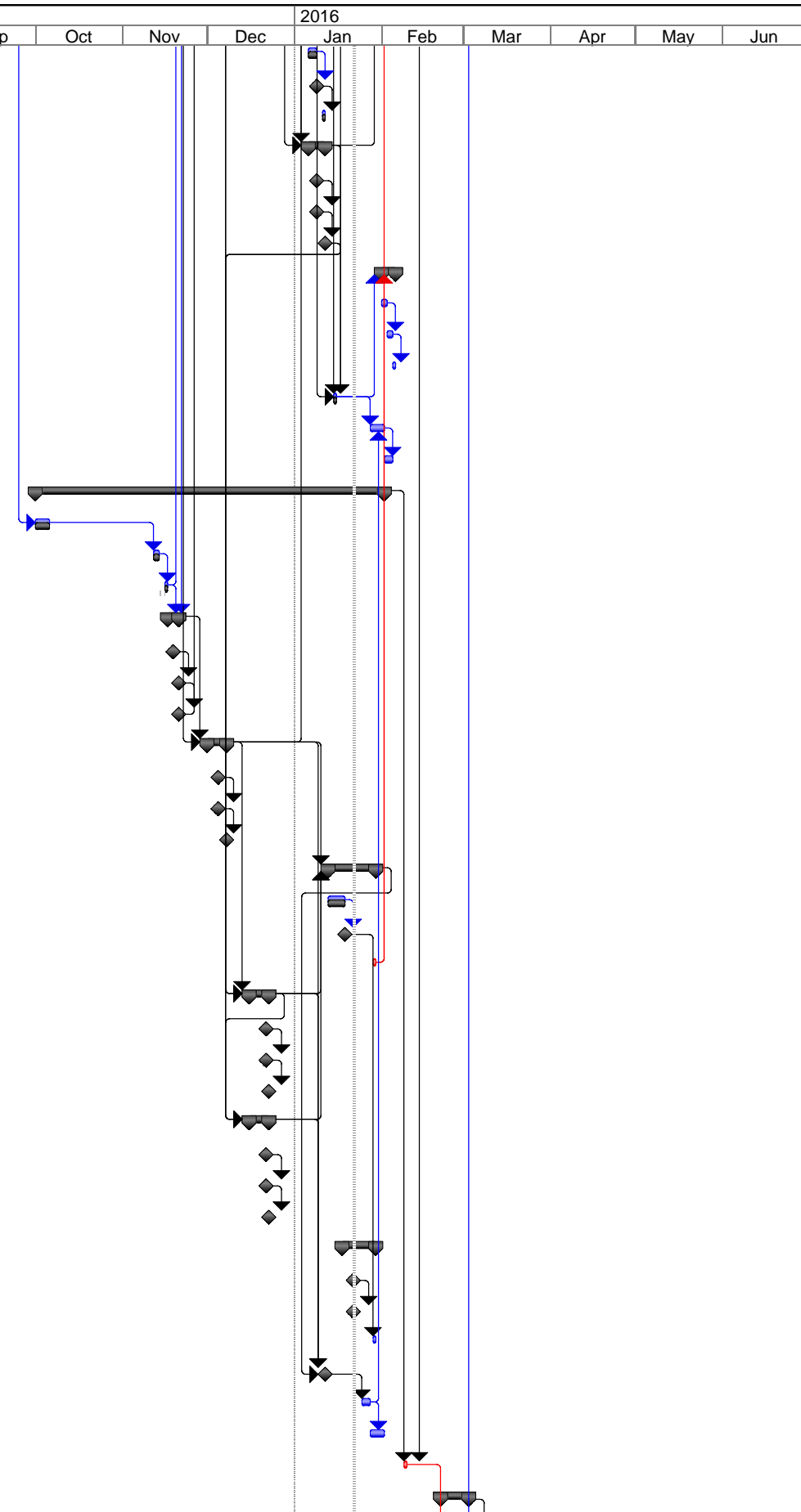


ID	Task Name	Duration	Start	Finish	Actual Start	Actual Finish	2016															
							Aug	Sep	Oct	Nov	Dec	Jan	Feb	Mar	Apr	May	Jun					
1	PRECONSTRUCTION CONFERENCE	1 day	Thu 8/20/15	Thu 8/20/15	Thu 8/20/15	Thu 8/20/15																
2	NOTICE TO PROCEED	1 day	Mon 8/31/15	Mon 8/31/15	Mon 8/31/15	Mon 8/31/15																
3	Submittals	115 days	Tue 8/11/15	Tue 1/19/16	Tue 8/11/15	NA																
4	SWPPP Plan	9 days	Mon 8/17/15	Wed 9/2/15	Mon 8/17/15	Wed 9/2/15																
5	Concrete Mix Designs	44 days	Thu 8/20/15	Tue 10/20/15	Thu 8/20/15	Tue 10/20/15																
6	Remove Existing Bridge Plan	11 days	Thu 8/20/15	Mon 9/14/15	Thu 8/20/15	Mon 9/14/15																
7	Cofferdam Plan	19 days	Thu 8/20/15	Thu 9/24/15	Thu 8/20/15	Thu 9/24/15																
8	Butted Deck Beams Shop Drawings	11 days	Tue 8/11/15	Wed 8/26/15	Tue 8/11/15	Wed 8/26/15																
9	Butted Deck Beam Erection Plan	4 days	Thu 1/14/16	Tue 1/19/16	Thu 1/14/16	Tue 1/19/16																
10	Elastomeric Bearing Pads	1 day	Wed 11/18/15	Wed 11/18/15	Wed 11/18/15	Wed 11/18/15																
11	Reinforcing Steel Plans	16 days	Fri 8/28/15	Tue 9/22/15	Fri 8/28/15	Tue 9/22/15																
12	Bridge and Approach Rail	82 days	Thu 8/27/15	Fri 12/18/15	Thu 8/27/15	Fri 12/18/15																
13	Pavement Mix Designs	10 days	Tue 10/27/15	Mon 11/9/15	NA	NA																
14	Procurement	212 days	Thu 9/24/15	Fri 7/15/16	Thu 9/24/15	NA																
15	Butted Deck Beams	9 days	Wed 11/18/15	Mon 11/30/15	Wed 11/18/15	Mon 11/30/15																
16	Elastomeric Bearing Pads	19 days	Mon 11/30/15	Thu 12/24/15	Mon 11/30/15	Thu 12/24/15																
17	Reinforcing Steel	16 days	Thu 9/24/15	Thu 10/15/15	Thu 9/24/15	Thu 10/15/15																
18	Abutment A	16 days	Thu 9/24/15	Thu 10/15/15	Thu 9/24/15	Thu 10/15/15																
19	Abutment B	16 days	Thu 9/24/15	Thu 10/15/15	Thu 9/24/15	Thu 10/15/15																
20	Deck	16 days	Thu 9/24/15	Thu 10/15/15	Thu 9/24/15	Thu 10/15/15																
21	Bridge and Approach Rail	150 days	Mon 12/21/15	Fri 7/15/16	Mon 12/21/15	NA																
22	Construction	191 days	Mon 8/31/15	Mon 5/23/16	Mon 8/31/15	NA																
23	Mobilize PCMB for Advance Detour Notice	13 days	Mon 8/31/15	Wed 9/16/15	Mon 8/31/15	Wed 9/16/15																
24	Install Detour Signs	3 days	Mon 9/7/15	Wed 9/9/15	Mon 9/7/15	Wed 9/9/15																
25	Close Road	1 day	Wed 9/16/15	Wed 9/16/15	Wed 9/16/15	Wed 9/16/15																
26	Clear and Grub	28 days	Mon 9/21/15	Wed 10/28/15	Mon 9/21/15	NA																
27	Remove Existing Bridge	7 days	Mon 9/21/15	Tue 9/29/15	Mon 9/21/15	Tue 9/29/15																
28	Deck	3 days	Mon 9/21/15	Wed 9/23/15	Mon 9/21/15	Wed 9/23/15																
29	Beams	1 day	Thu 9/24/15	Thu 9/24/15	Thu 9/24/15	Thu 9/24/15																
30	Substructure	3.25 days	Thu 9/24/15	Tue 9/29/15	Thu 9/24/15	Tue 9/29/15																
31	Abutment A	90 days	Tue 10/6/15	Mon 2/8/16	Tue 10/6/15	NA																
32	Cofferdam	6 days	Tue 10/6/15	Tue 10/13/15	Tue 10/6/15	Tue 10/13/15																
33	Excavate	1 day	Mon 11/16/15	Tue 11/17/15	Mon 11/16/15	Tue 11/17/15																
34	Install structural fill	1 day	Tue 11/17/15	Wed 11/18/15	Tue 11/17/15	Wed 11/18/15																
35	Footing	6 days	Mon 11/23/15	Mon 11/30/15	Mon 11/23/15	Mon 11/30/15																
36	Form	3 days	Mon 11/23/15	Wed 11/25/15	Mon 11/23/15	Wed 11/25/15																
37	Rebar	2 days	Wed 11/25/15	Fri 11/27/15	Wed 11/25/15	Fri 11/27/15																
38	Pour	1 day	Mon 11/30/15	Mon 11/30/15	Mon 11/30/15	Mon 11/30/15																
39	Abutment Stem	5 days	Wed 12/9/15	Tue 12/15/15	Wed 12/9/15	Tue 12/15/15																
40	Form	4 days	Wed 12/9/15	Mon 12/14/15	Wed 12/9/15	Mon 12/14/15																
41	Rebar	0 days	Thu 12/10/15	Mon 12/14/15	Thu 12/10/15	Mon 12/14/15																
42	Pour	1 day	Tue 12/15/15	Tue 12/15/15	Tue 12/15/15	Tue 12/15/15																
43	Backwall	6 days	Mon 2/1/16	Mon 2/8/16	NA	NA																
44	Form	3 days	Mon 2/1/16	Wed 2/3/16	NA	NA																
45	Rebar	2 days	Thu 2/4/16	Fri 2/5/16	NA	NA																
46	Pour	1 day	Mon 2/8/16	Mon 2/8/16	NA	NA																
47	Southwest Wingwall	4 days	Wed 1/6/16	Mon 1/11/16	Wed 1/6/16	Mon 1/11/16																



ID	Task Name	Duration	Start	Finish	Actual Start	Actual Finish	2016															
							Aug	Sep	Oct	Nov	Dec	Jan	Feb	Mar	Apr	May	Jun					
48	Form	3 days	Wed 1/6/16	Fri 1/8/16	Wed 1/6/16	Fri 1/8/16																
49	Rebar	0 days	Fri 1/8/16	Fri 1/8/16	Fri 1/8/16	Fri 1/8/16																
50	Pour	1 day	Mon 1/11/16	Mon 1/11/16	Mon 1/11/16	Mon 1/11/16																
51	Northwest Wingwall	4 days	Wed 1/6/16	Mon 1/11/16	Wed 1/6/16	Mon 1/11/16																
52	Form	0 days	Wed 1/6/16	Fri 1/8/16	Wed 1/6/16	Fri 1/8/16																
53	Rebar	0 days	Fri 1/8/16	Fri 1/8/16	Fri 1/8/16	Fri 1/8/16																
54	Pour	0 days	Mon 1/11/16	Mon 1/11/16	Mon 1/11/16	Mon 1/11/16																
55	Wingwall Caps	5 days	Mon 2/1/16	Fri 2/5/16	NA	NA																
56	Form	2 days	Mon 2/1/16	Tue 2/2/16	NA	NA																
57	Rebar	2 days	Wed 2/3/16	Thu 2/4/16	NA	NA																
58	Pour	1 day	Fri 2/5/16	Fri 2/5/16	NA	NA																
59	Backfill	1 day	Fri 1/15/16	Fri 1/15/16	Fri 1/15/16	Fri 1/15/16																
60	Remove Cofferdam	3 days	Thu 1/28/16	Mon 2/1/16	NA	NA																
61	Stone Fill	3 days	Tue 2/2/16	Thu 2/4/16	NA	NA																
62	Abutment B	88 days	Thu 10/1/15	Mon 2/1/16	Thu 10/1/15	NA																
63	Cofferdam	3 days	Thu 10/1/15	Mon 10/5/15	Thu 10/1/15	Mon 10/5/15																
64	Excavate	2 days	Thu 11/12/15	Fri 11/13/15	Thu 11/12/15	Fri 11/13/15																
65	Install structural fill	1 day	Fri 11/13/15	Mon 11/16/15	Fri 11/13/15	Mon 11/16/15																
66	Footing	4 days	Tue 11/17/15	Fri 11/20/15	Tue 11/17/15	Fri 11/20/15																
67	Form	0 days	Tue 11/17/15	Wed 11/18/15	Tue 11/17/15	Wed 11/18/15																
68	Rebar	0 days	Thu 11/19/15	Fri 11/20/15	Thu 11/19/15	Fri 11/20/15																
69	Pour	0 days	Fri 11/20/15	Fri 11/20/15	Fri 11/20/15	Fri 11/20/15																
70	Abutment Stem	5 days	Tue 12/1/15	Mon 12/7/15	Tue 12/1/15	Mon 12/7/15																
71	Form	0 days	Tue 12/1/15	Fri 12/4/15	Tue 12/1/15	Fri 12/4/15																
72	Rebar	0 days	Wed 12/2/15	Fri 12/4/15	Wed 12/2/15	Fri 12/4/15																
73	Pour	0 days	Mon 12/7/15	Mon 12/7/15	Mon 12/7/15	Mon 12/7/15																
74	Backwall	13 days	Wed 1/13/16	Fri 1/29/16	Wed 1/13/16	NA																
75	Form	4 days	Wed 1/13/16	Mon 1/18/16	Wed 1/13/16	Mon 1/18/16																
76	Rebar	0 days	Thu 1/14/16	Mon 1/18/16	Thu 1/14/16	Mon 1/18/16																
77	Pour	1 day	Fri 1/29/16	Fri 1/29/16	NA	NA																
78	Northeast Wingwall	5 days	Wed 12/16/15	Tue 12/22/15	Wed 12/16/15	Tue 12/22/15																
79	Form	0 days	Wed 12/16/15	Mon 12/21/15	Wed 12/16/15	Mon 12/21/15																
80	Rebar	0 days	Thu 12/17/15	Mon 12/21/15	Thu 12/17/15	Mon 12/21/15																
81	Pour	0 days	Tue 12/22/15	Tue 12/22/15	Tue 12/22/15	Tue 12/22/15																
82	Southeast Wingwall	5 days	Wed 12/16/15	Tue 12/22/15	Wed 12/16/15	Tue 12/22/15																
83	Form	0 days	Wed 12/16/15	Mon 12/21/15	Wed 12/16/15	Mon 12/21/15																
84	Rebar	0 days	Thu 12/17/15	Mon 12/21/15	Thu 12/17/15	Mon 12/21/15																
85	Pour	0 days	Tue 12/22/15	Tue 12/22/15	Tue 12/22/15	Tue 12/22/15																
86	Wingwall Caps	10 days	Mon 1/18/16	Fri 1/29/16	Mon 1/18/16	NA																
87	Form	0 days	Mon 1/18/16	Thu 1/21/16	Mon 1/18/16	Thu 1/21/16																
88	Rebar	0 days	Mon 1/18/16	Thu 1/21/16	Mon 1/18/16	Thu 1/21/16																
89	Pour	1 day	Fri 1/29/16	Fri 1/29/16	NA	NA																
90	Backfill	0 days	Mon 1/11/16	Mon 1/11/16	Mon 1/11/16	Mon 1/11/16																
91	Remove Cofferdam	3 days	Mon 1/25/16	Wed 1/27/16	NA	NA																
92	Stone Fill	3 days	Thu 1/28/16	Mon 2/1/16	NA	NA																
93	Install Bearing pads	1 day	Tue 2/9/16	Tue 2/9/16	NA	NA																
94	Butted Deck Beams	8 days	Mon 2/22/16	Wed 3/2/16	NA	NA																



ID	Task Name	Duration	Start	Finish	Actual Start	Actual Finish	2016												
							Aug	Sep	Oct	Nov	Dec	Jan	Feb	Mar	Apr	May	Jun		
95	Erection	1 day	Mon 2/22/16	Mon 2/22/16	NA	NA													
96	Post Tension	1 day	Tue 2/23/16	Tue 2/23/16	NA	NA													
97	Grout	5 days	Wed 2/24/16	Tue 3/1/16	NA	NA													
98	Post Tension	1 day	Wed 3/2/16	Wed 3/2/16	NA	NA													
99	Construct Deck	25 days	Thu 3/3/16	Wed 4/6/16	NA	NA													
100	Form Deck Ends	4 days	Thu 3/3/16	Tue 3/8/16	NA	NA													
101	Form Overhangs	4 days	Thu 3/3/16	Tue 3/8/16	NA	NA													
102	Bidwell Prep	10 days	Wed 3/9/16	Tue 3/22/16	NA	NA													
103	Place Overlay	1 day	Wed 3/23/16	Wed 3/23/16	NA	NA													
104	Brush Curb	10 days	Thu 3/24/16	Wed 4/6/16	NA	NA													
105	Form	5 days	Thu 3/24/16	Wed 3/30/16	NA	NA													
106	Rebar	3 days	Thu 3/31/16	Mon 4/4/16	NA	NA													
107	Pour	2 days	Tue 4/5/16	Wed 4/6/16	NA	NA													
108	Install Bridge Rail	3 days	Mon 4/18/16	Wed 4/20/16	NA	NA													
109	Membrane	3 days	Thu 4/21/16	Mon 4/25/16	NA	NA													
110	Pave bridge base	1 day	Tue 4/26/16	Tue 4/26/16	NA	NA													
111	Strip Deck	5 days	Thu 4/21/16	Wed 4/27/16	NA	NA													
112	Roadwork	31 days	Mon 4/4/16	Mon 5/16/16	NA	NA													
113	Drainage	10 days	Mon 4/4/16	Fri 4/15/16	NA	NA													
114	Excavation & Select Placement	15 days	Mon 4/18/16	Fri 5/6/16	NA	NA													
115	Slope Work	5 days	Mon 5/9/16	Fri 5/13/16	NA	NA													
116	Pave Binder	1 day	Mon 5/16/16	Mon 5/16/16	NA	NA													
117	Guardrail	3 days	Tue 5/17/16	Thu 5/19/16	NA	NA													
118	Pave Wearing Course	1 day	Fri 5/20/16	Fri 5/20/16	NA	NA													
119	Striping	1 day	Mon 5/23/16	Mon 5/23/16	NA	NA													
120	Substantial Completion Date	0 days	Fri 5/27/16	Fri 5/27/16	NA	NA													
121	Cleanup	20 days	Tue 5/24/16	Mon 6/20/16	NA	NA													
122	Punchlist	20 days	Tue 5/24/16	Mon 6/20/16	NA	NA													
123	Final Completion Date	0 days	Fri 6/24/16	Fri 6/24/16	NA	NA													

