

THE **GALANTE** ARCHITECTURE STUDIO

SUSTAINABLE, COST-EFFECTIVE PUBLIC SAFETY SPECIALISTS



TOWN OF SALEM, NH POLICE STATION

August 21st, 2023

The Galante Architecture Studio
146 Mount Auburn Street
Cambridge, MA 02138

P: (617) 576-2500
galantearchitecture.com

A. Programming study

B. Site plan / massing models

C. Next steps

Comparable Police Facilities

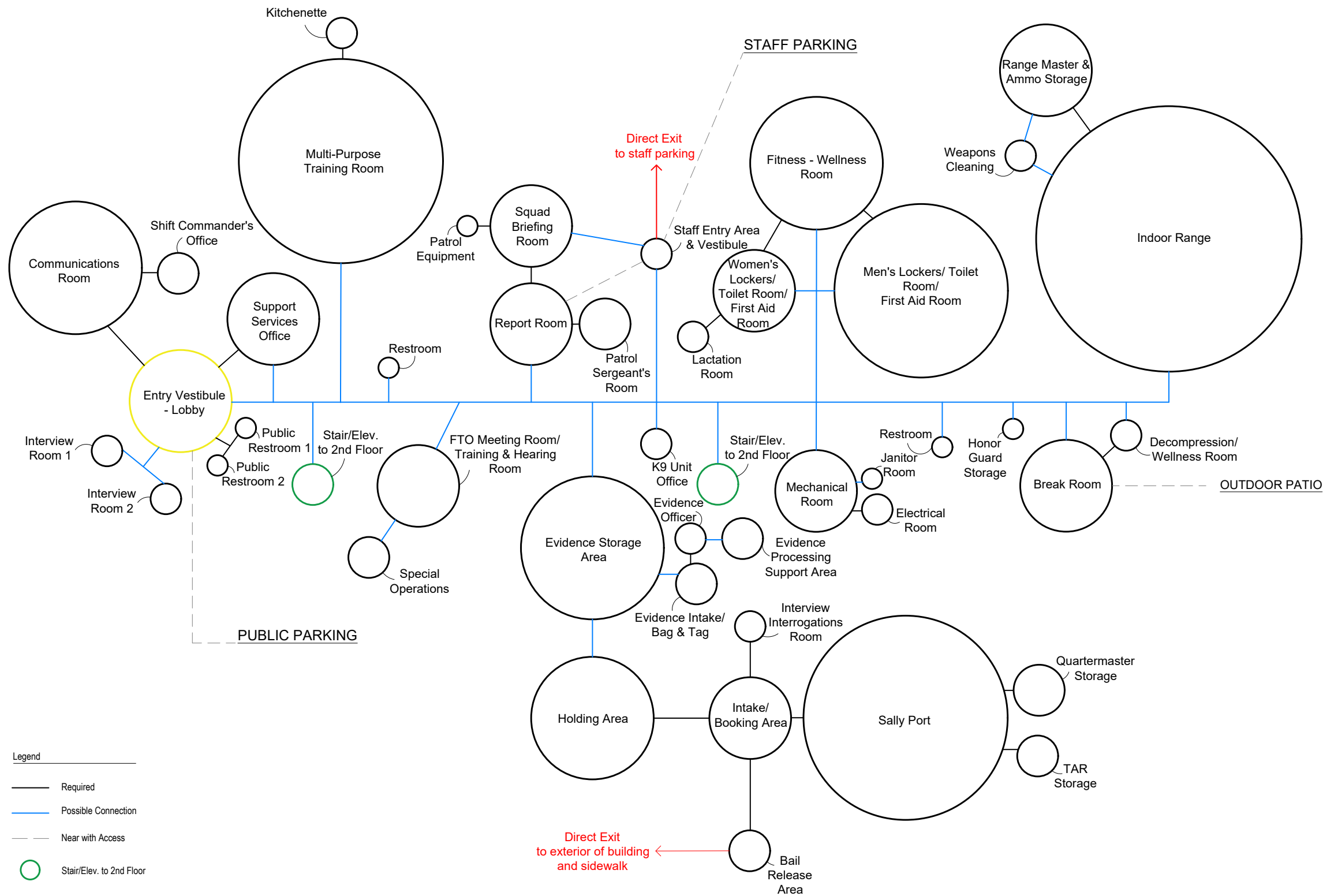
Town	Square Footage
Dover, NH	30,000 SF
Beverly, MA	32,000 SF
Lexington, MA	30,000 SF
Shrewsbury, MA	31,000 SF
Bourne, MA	27,000 SF
Medford, MA	35,000 SF

Project Year	Square Footage	Site
2004	28,800 SF	- Different
2008	26,000 SF	- Same, new building behind current
2015	24,000 SF	- Same, safety complex shifted easterly, wetland mitigation

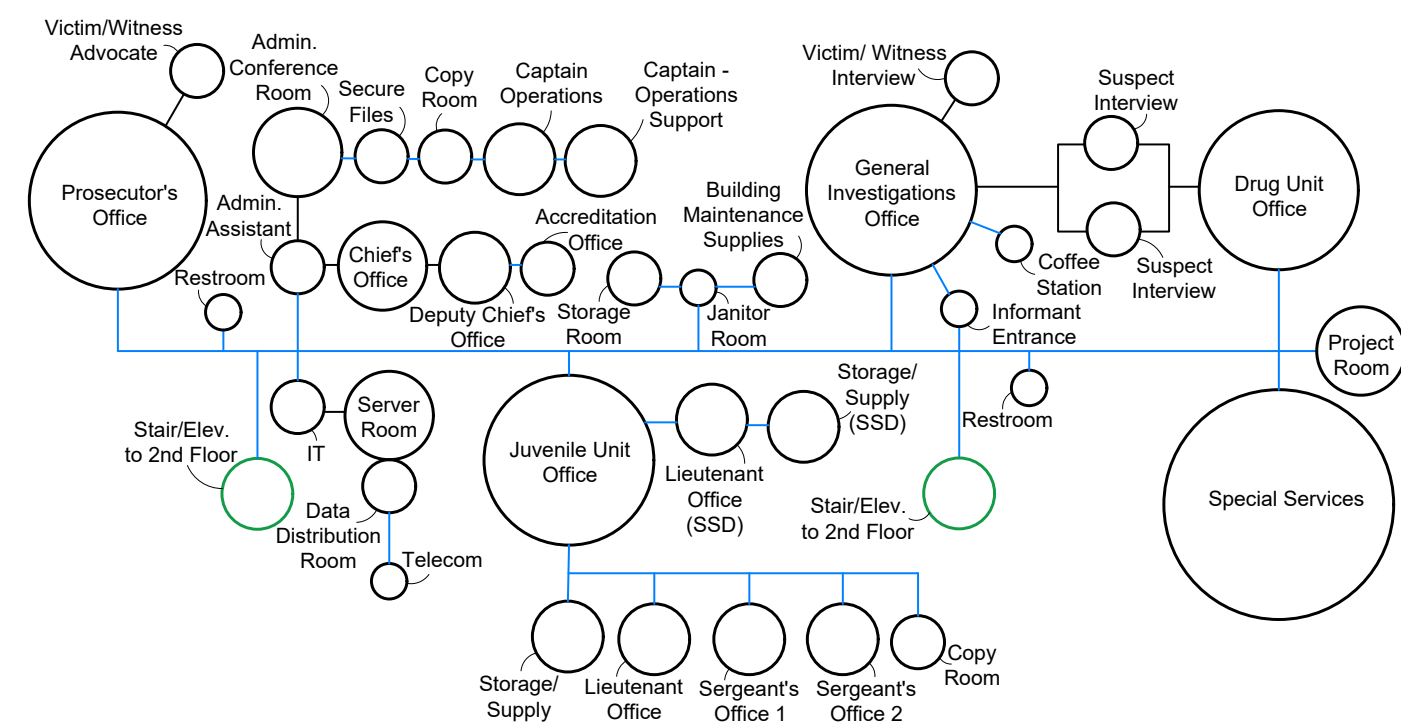
V4 Program Book Area Totals

Operational Area	25,605 square feet
K9 Outbuilidng	3,696 square feet
Training Range	3,045 square feet
Total Square Footage + 20% net to gross	32,346 square feet 6,469 square feet
Total Program Area	38,815 square feet

First Floor



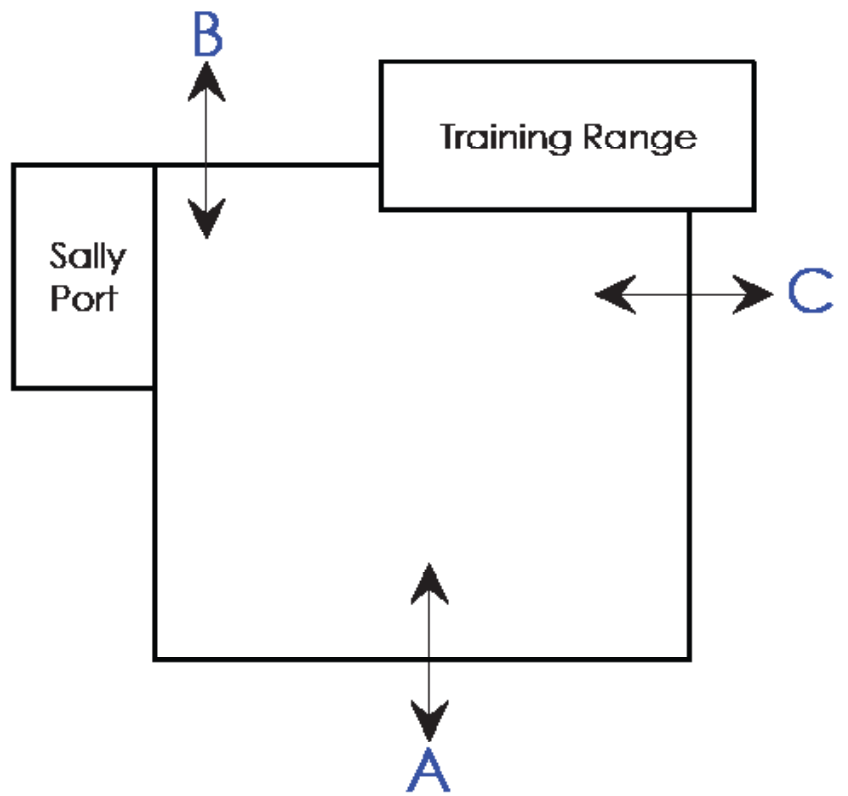
Second Floor



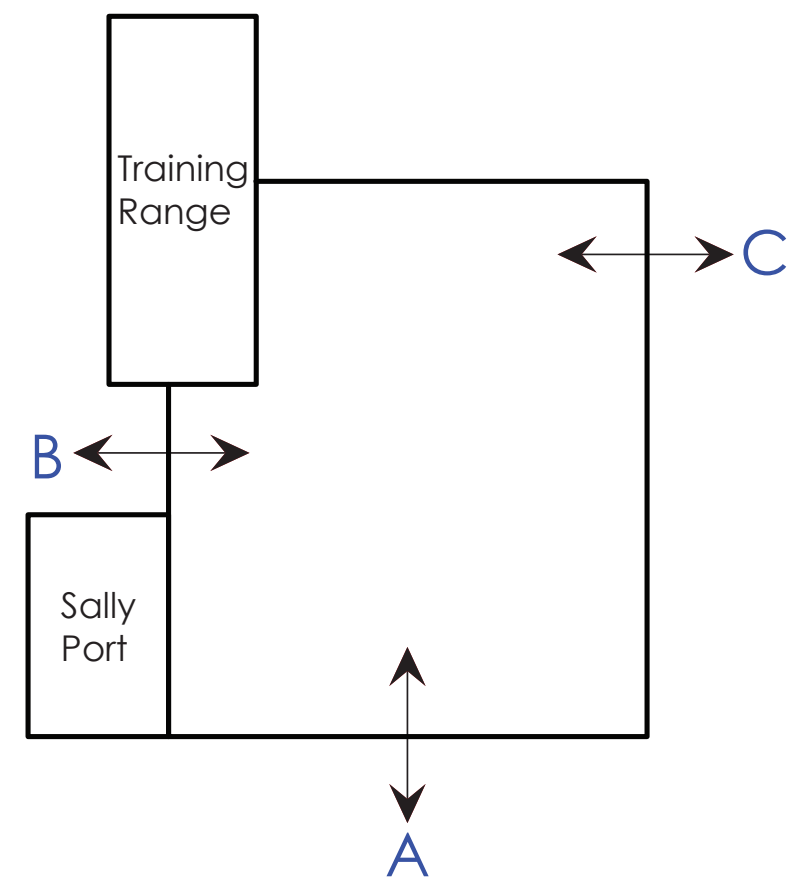
Legend

- Required
- Possible Connection
- Near with Access
- Stair/Elev. to 2nd Floor

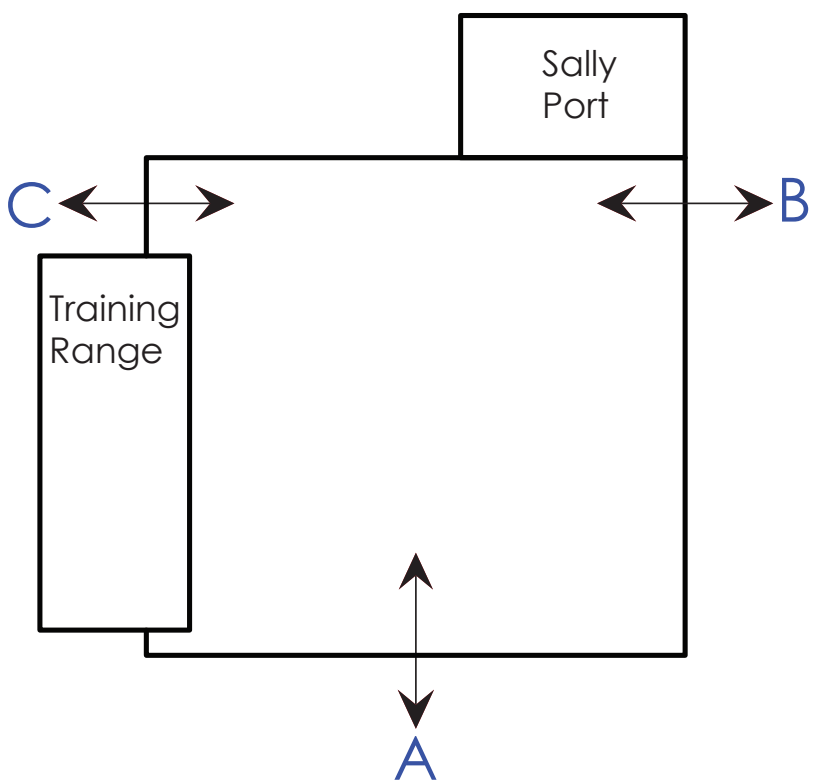
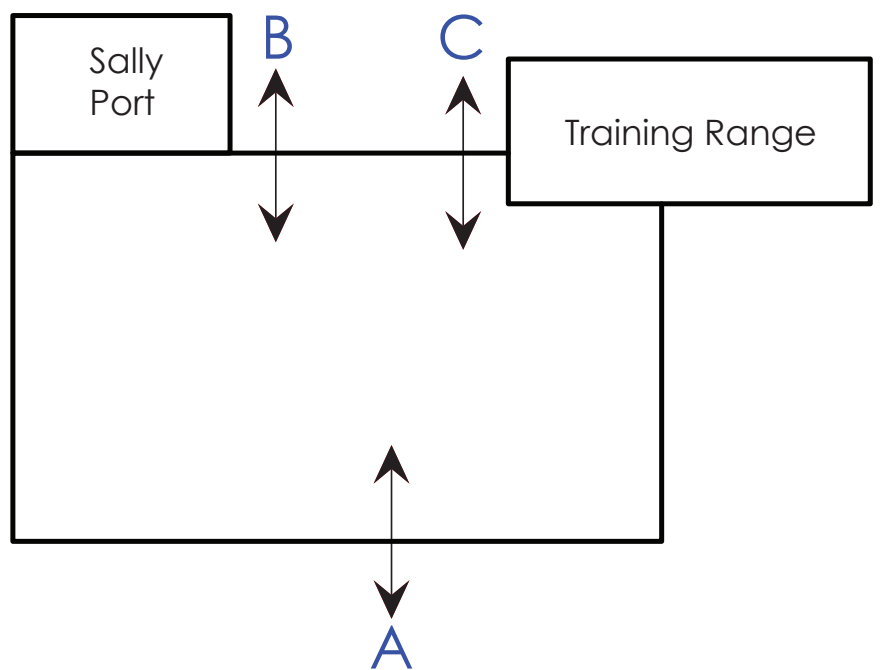
Entrance Layouts

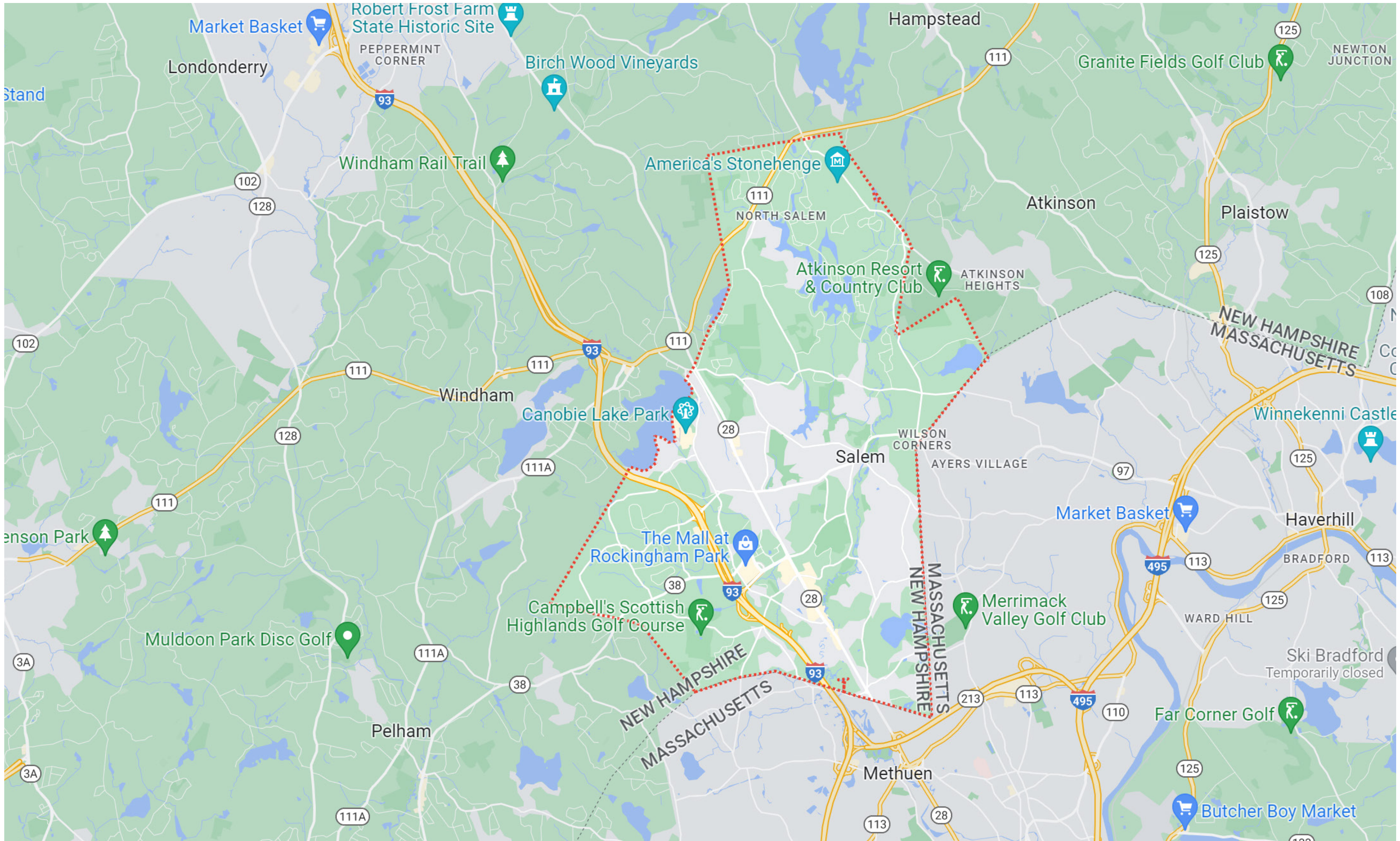


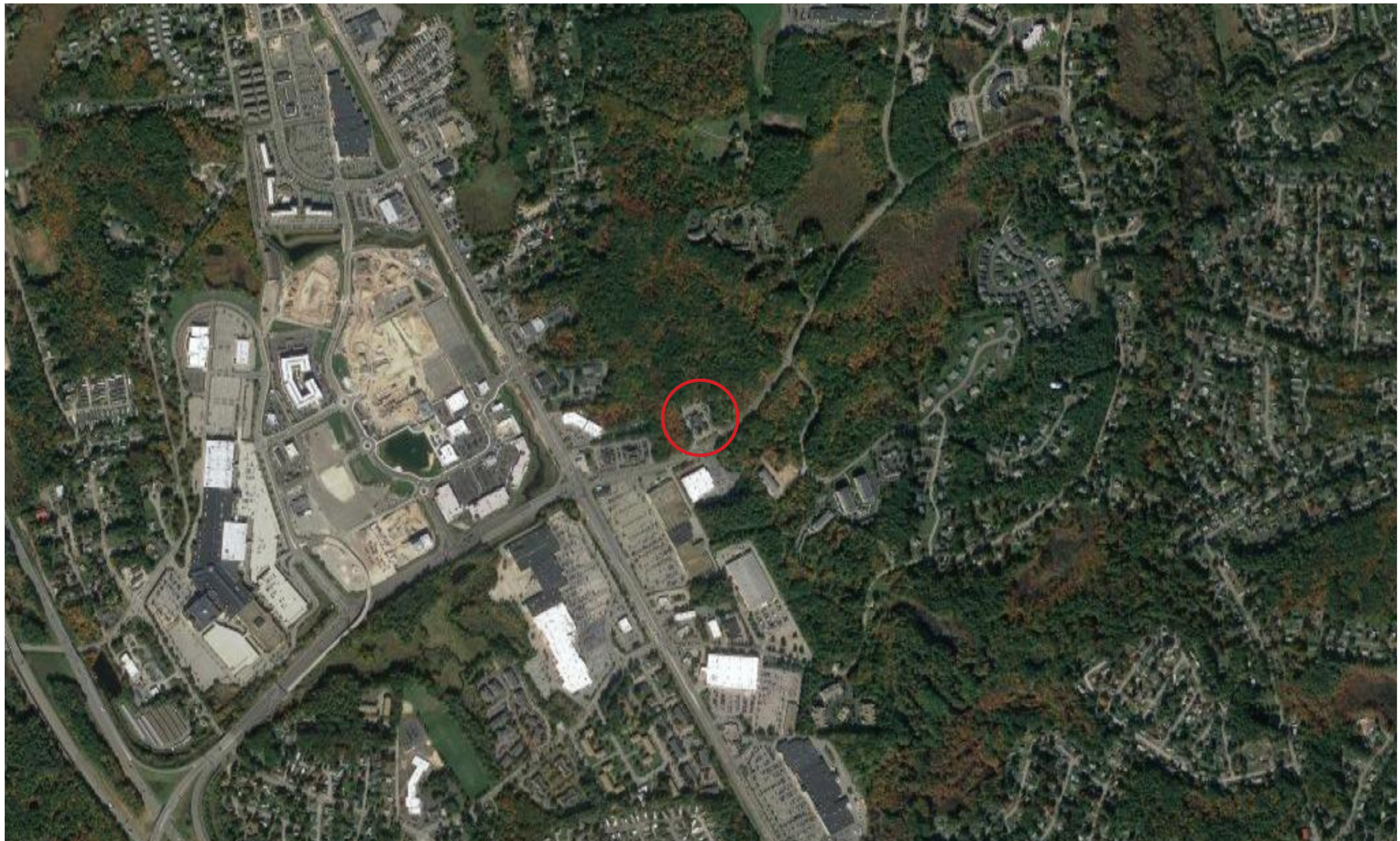
A= Public Entrance
B= Bail Release
C= Staff Entrance



A= Public Entrance
B= Bail Release
C= Staff Entrance

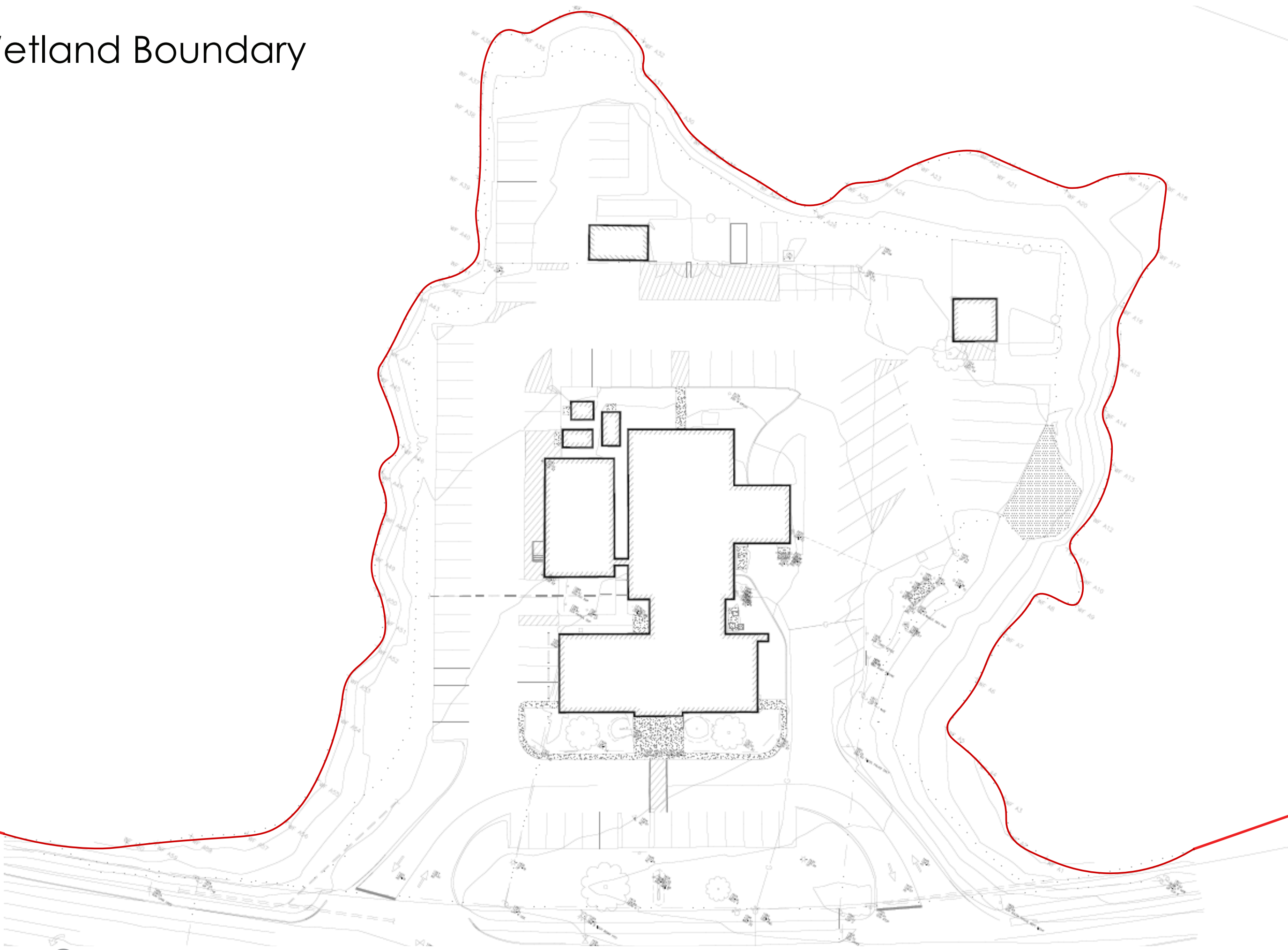




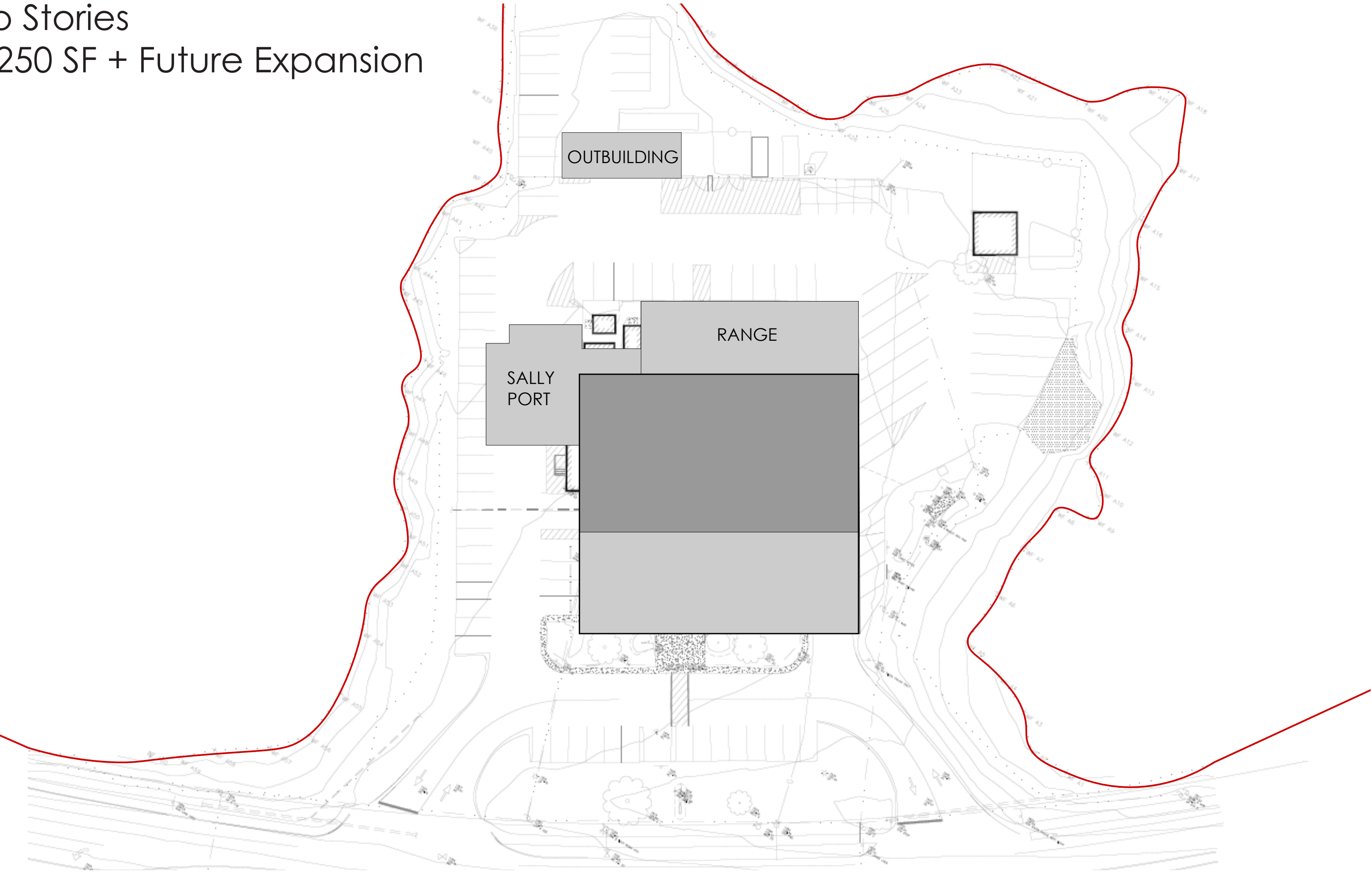


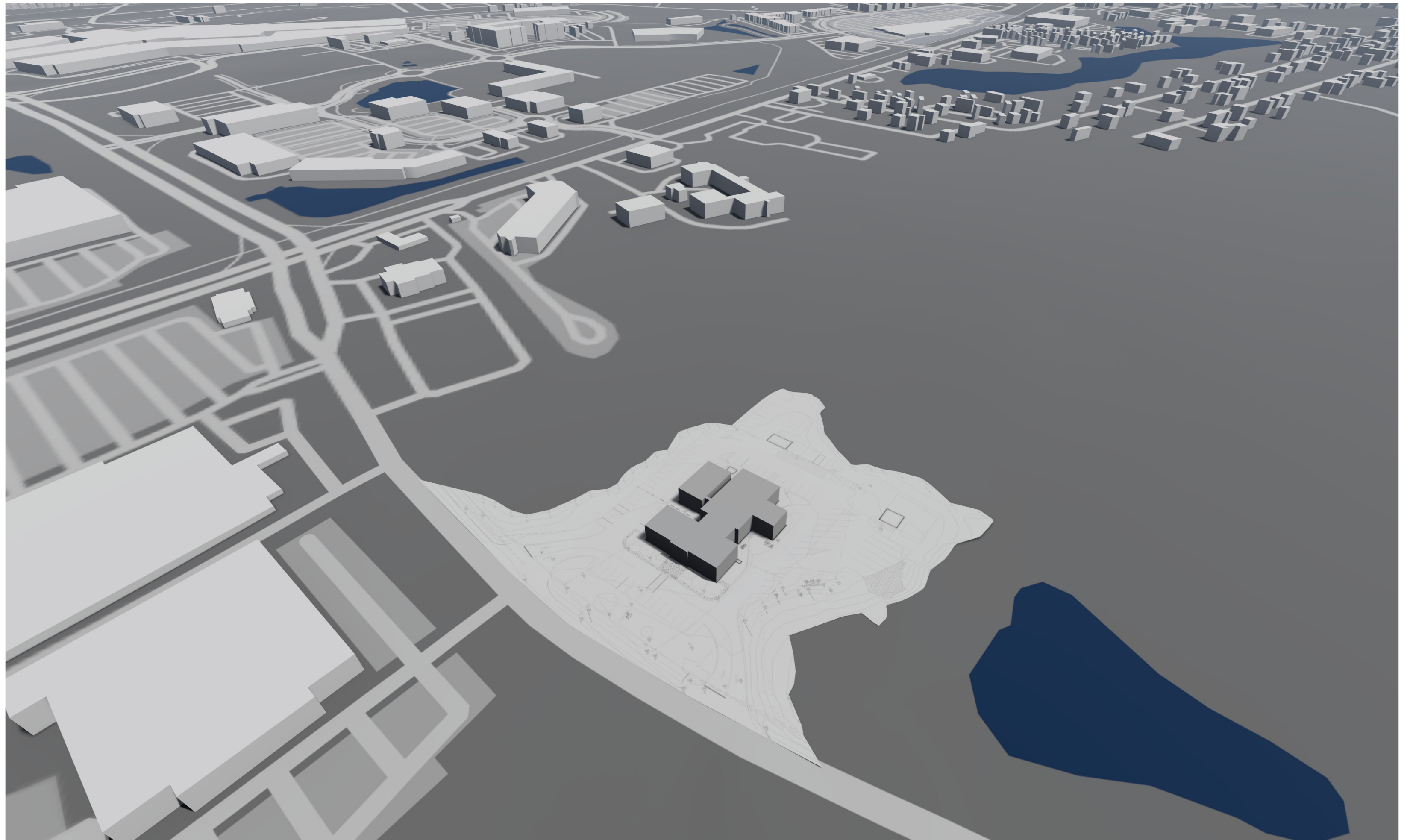


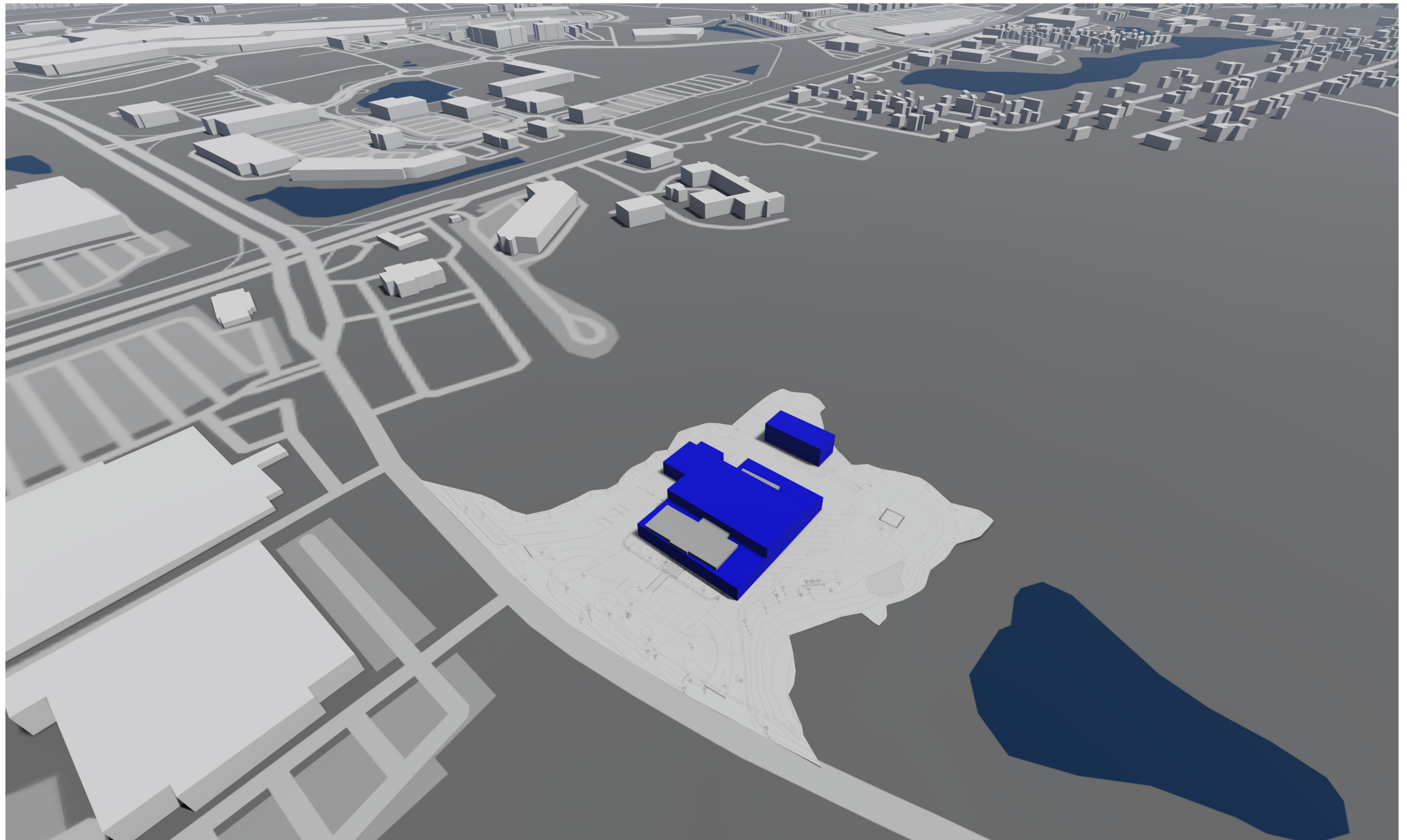
■ Wetland Boundary



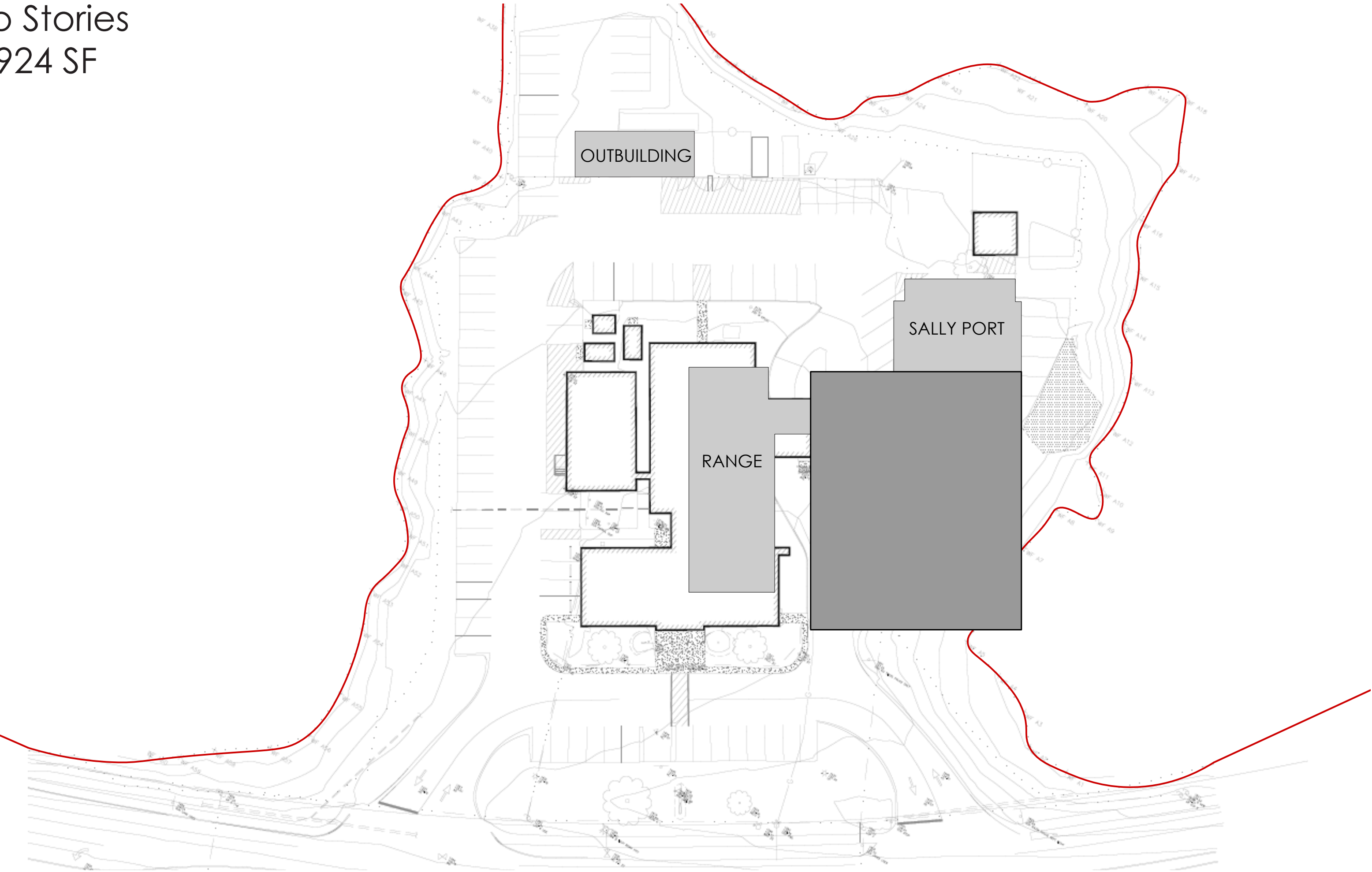
Two Stories
38,250 SF + Future Expansion

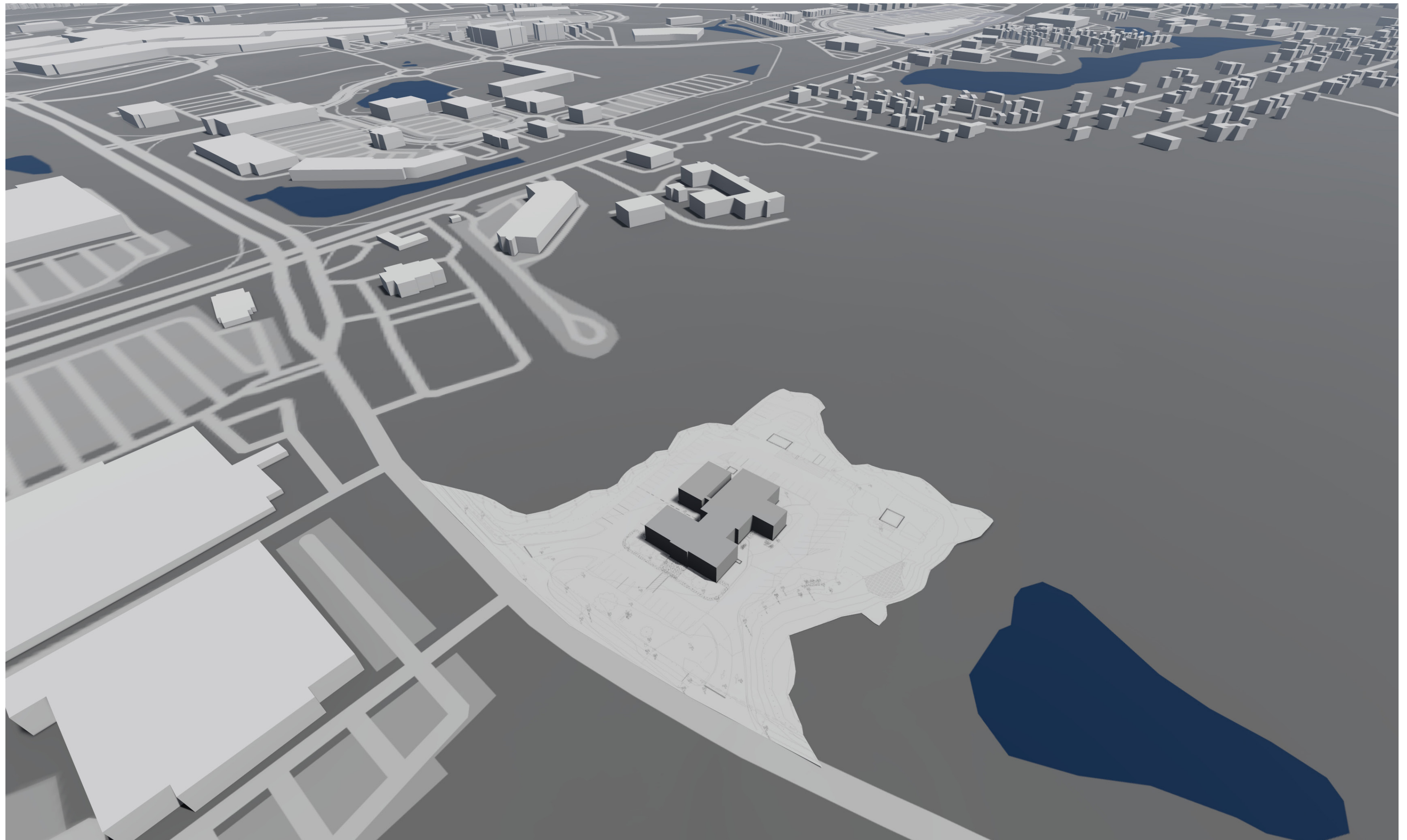


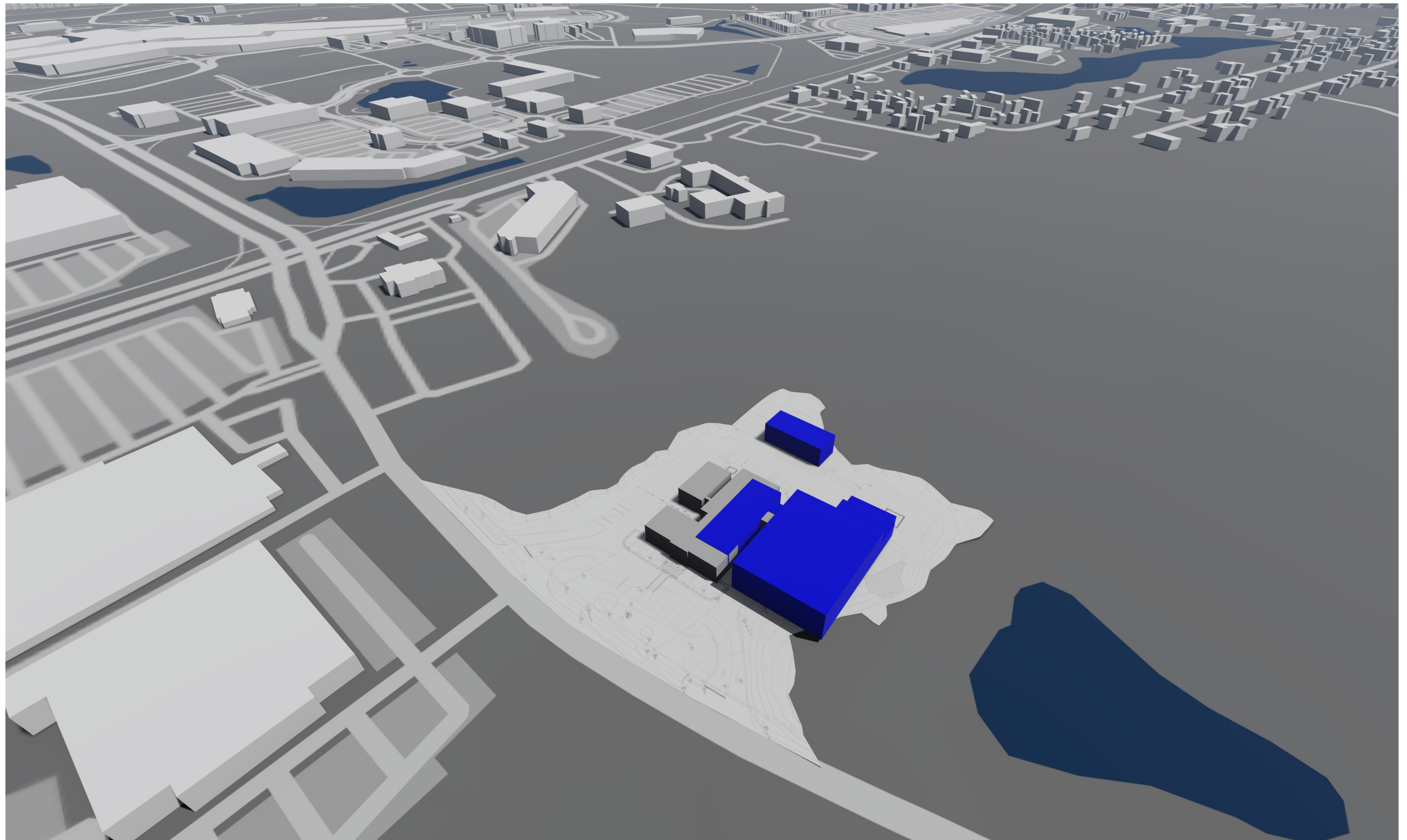




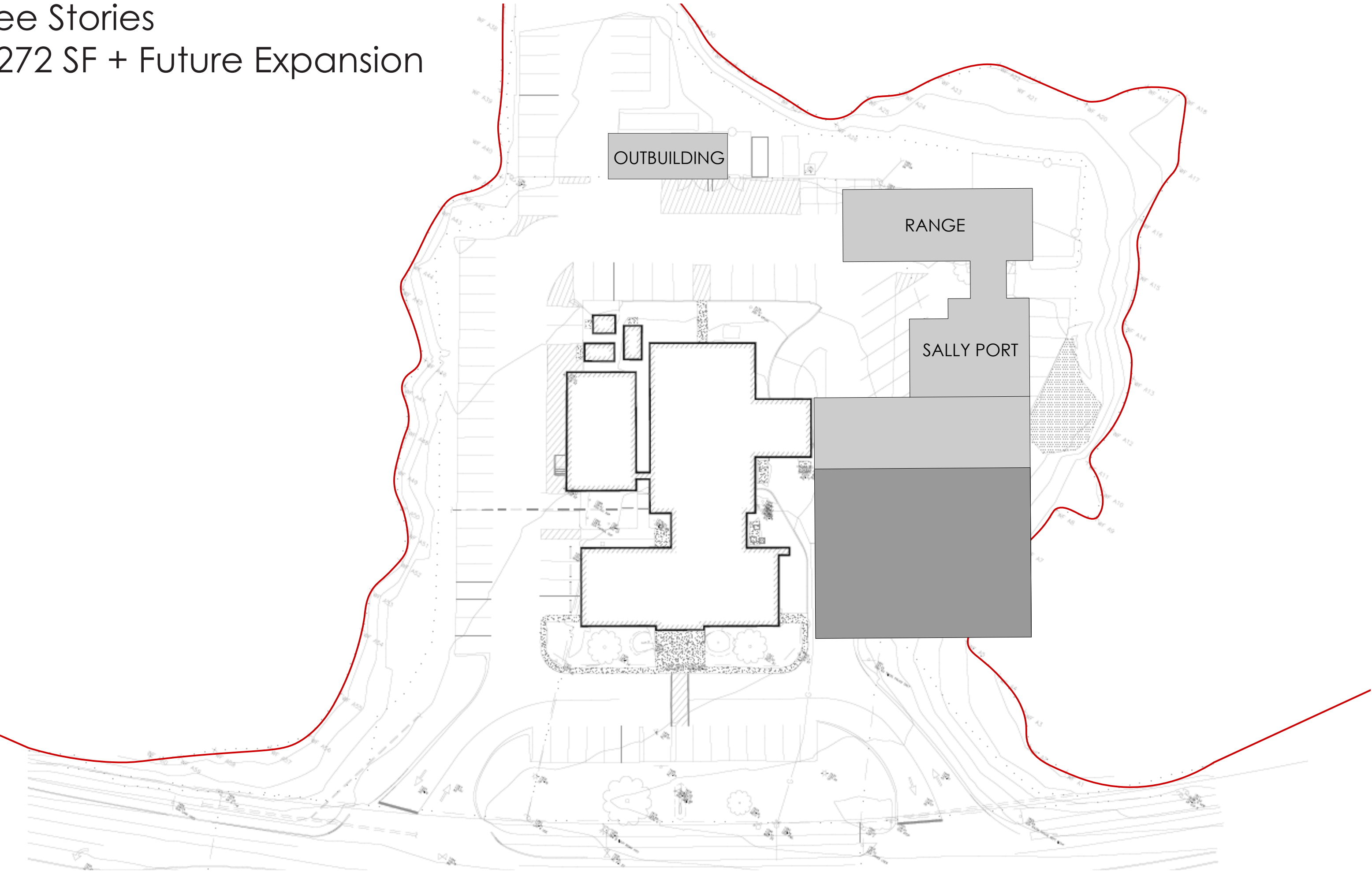
Two Stories
39,924 SF

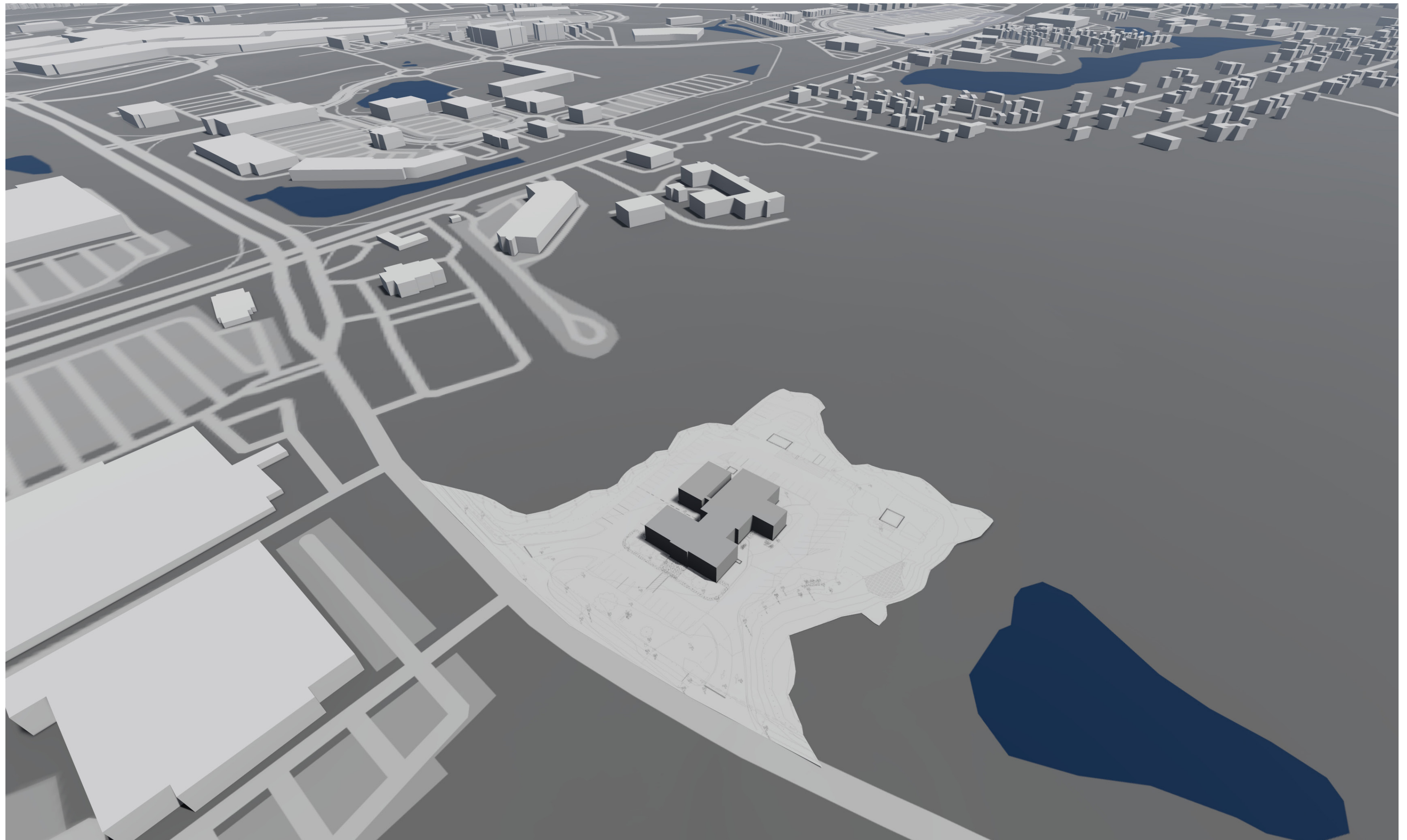


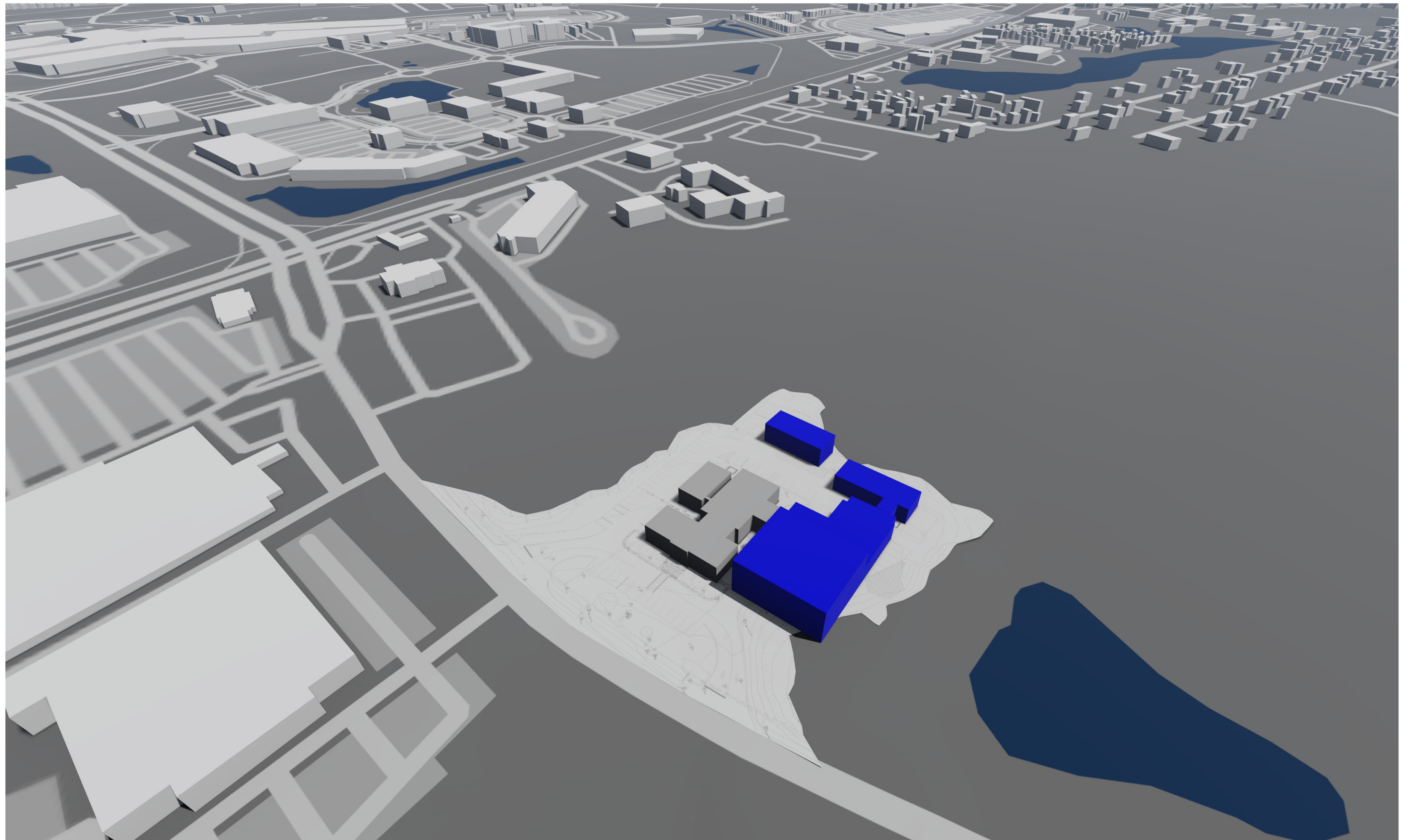




Three Stories
43,272 SF + Future Expansion







Next Steps

- A. Finalize interior building layout options with PD department
- B. Further develop 3D massings to determine site impact
- C. Construction phasing

TGAS

+

