



SALEM MUNICIPAL SERVICES



ENGINEERING ♦ PUBLIC WORKS ♦ UTILITIES

DEPOT RECONSTRUCTION PROJECT PUBLIC PRESENTATION

December 16, 2020

DEPOT INTERSECTION PROJECT



FHWA

NHDOT

SALEM

VHB

The intersection of Broadway (NH Route 28) with Main Street (NH Route 97), otherwise known as the Depot Intersection, has been plagued by traffic congestion and delays for many years. Additionally, the Depot Intersection has the highest vehicle crash rate of any intersection in Salem. In 1995 the Town and New Hampshire Department of Transportation (NHDOT) partnered to present the Depot Intersection Reconstruction Project to the Federal Highway Administration (FHWA). The NHDOT and FHWA saw the need for reconstruction and authorized funding for preliminary engineering (PE) to redesign and reconstruct the Depot Intersection. The project would be funded with 80% covered by NHDOT through FHWA and the remaining 20% covered by the Town of Salem, provided the project commenced to construction no later than 10 years from initial award (1995). Shortly thereafter in 1996, the Salem Board of Selectmen (BOS) agreed to provide 20% of the project funding and work with the NHDOT as the Project Manager. The NHDOT presented the Depot Intersection Improvement Plan to the BOS in November 1999 and set the project in motion.

Over the next several years the project continued through PE, Right-of-Way (ROW) Acquisition, and conceptual design phases, but fell behind the original project schedule. In 2008 the NHDOT requested a time extension of eight years. Meanwhile, the Town, through its Planning Board, adopted the Depot Intersection Redevelopment Concept Plan which served as a catalyst to move the project forward. A radius around the Depot Intersection was established to designate an area for enhancement to compliment the roadway improvements. These enhancement include, among other things, additional turn lanes and roadway widening. In March 2012, Salem entered into an agreement with NHDOT to become the Project Sponsor thus taking the lead in managing the project and engineering efforts. The Town procured Vanasse Hangen Brustlin, Inc. (VHB) to bring the project into Final Design (FE). Due to challenges in permitting and ROW Acquisitions, the project fell behind schedule again. FHWA has granted two additional time extensions since 2012. The project is presently on schedule to award the reconstruction contract in October 2020, meeting its current and final deadline from FHWA

DEPOT INTERSECTION PROJECT



FHWA

NHDOT

SALEM

VHB

- ✓ ■ ROW
- ✓ ■ Demolition
- ✓ ■ Final Design
- ✓ ■ Contract Award

- Exclusive left turn lanes on RT 28
- New Traffic Signals
- New Street Lighting
- Drainage Improvements
- Reconstruct Sidewalks
- Underground Utilities

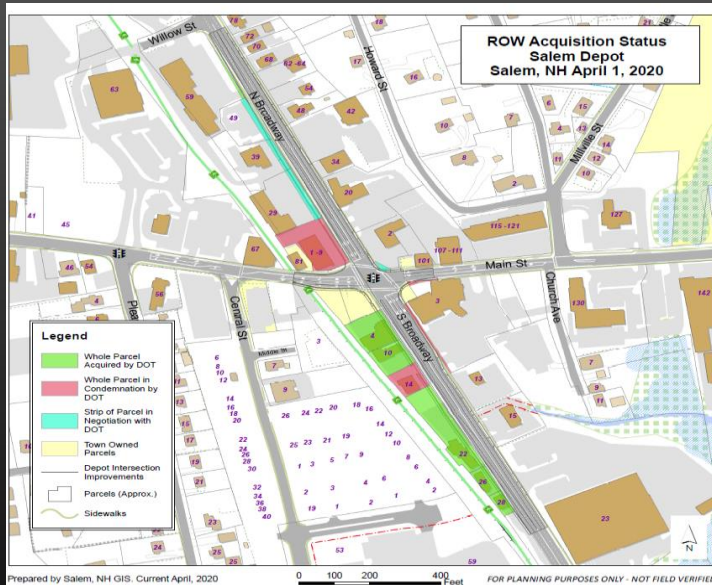


SALEM MUNICIPAL SERVICES

DEPOT PROJECT UPDATE



ROW – RIGHT OF WAY



- Seven Buildings – Eminent Domain
- Strip ROW Acquisitions:
 - 59 N. Broadway (Dodge Grain)
 - 2 S. Broadway (Town Owned)
 - 1 S. Broadway (Town Owned)
 - 90 Min St (Town Owned)
 - 3 S. Broadway (Salem Co-Op Bank)
 - 2 N. Broadway (Sunoco Station)
 - 29, 39, & 49 N. Broadway (Sal's/Lupoli)
 - Temporary Construction Easements along the east side of N. Broadway have been acquired.
- 22 entities have been relocated.

DEPOT PROJECT UPDATE



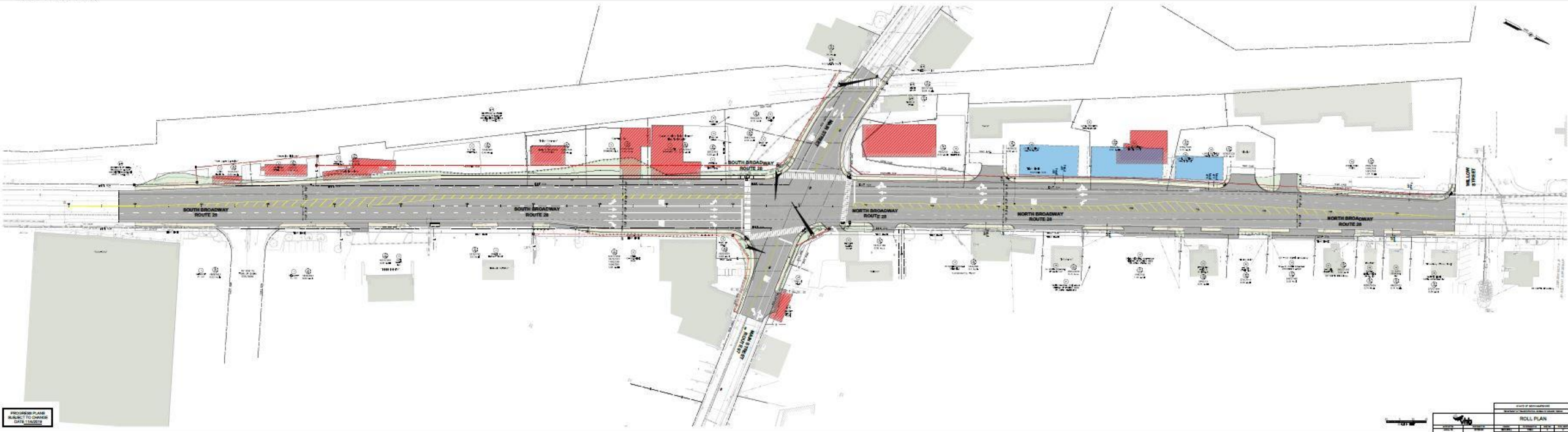
BUILDING DEMOLITION



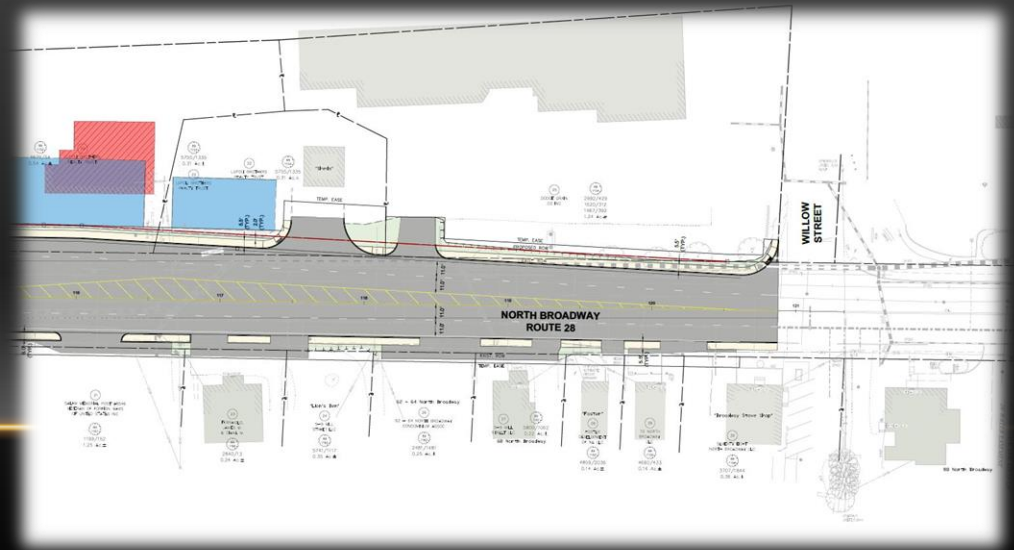
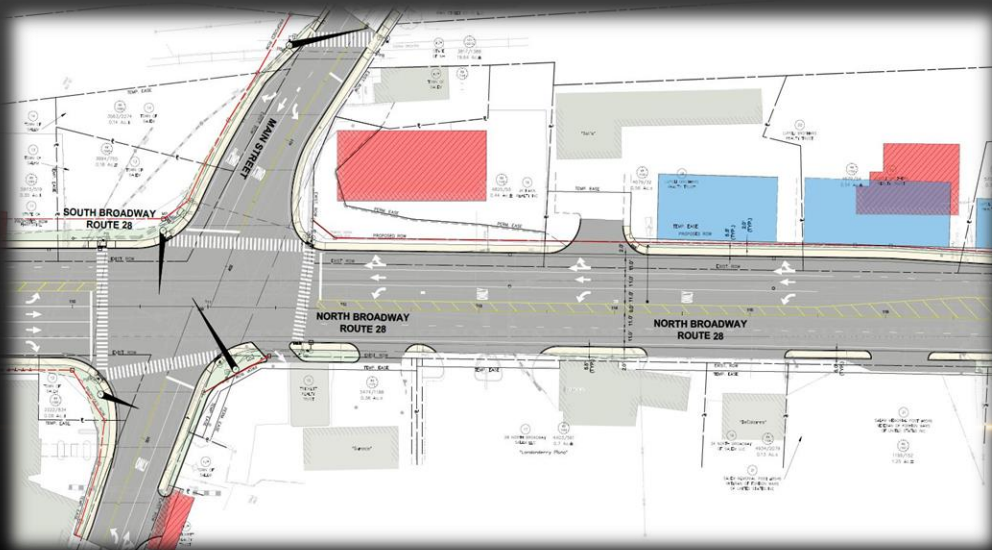
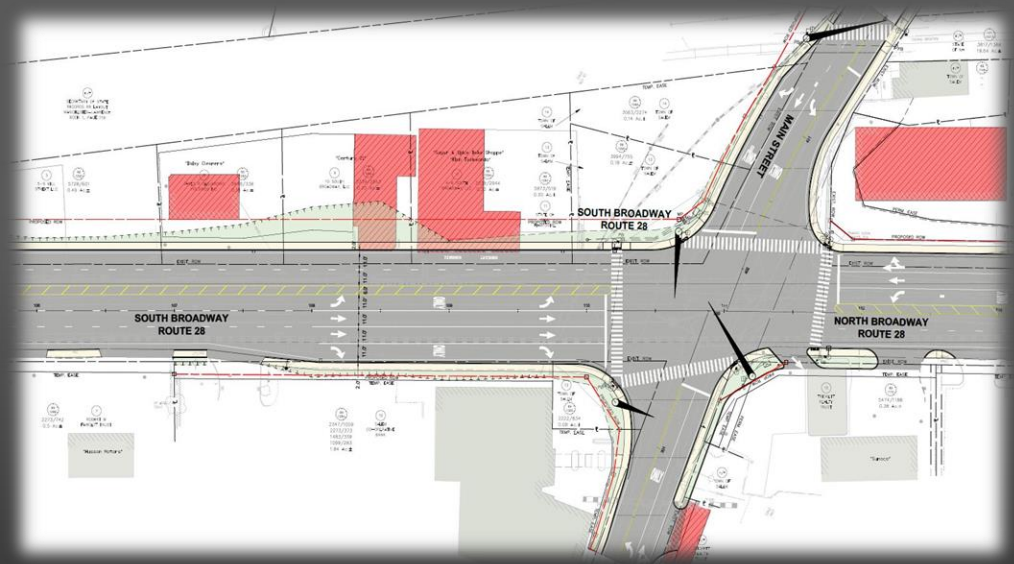
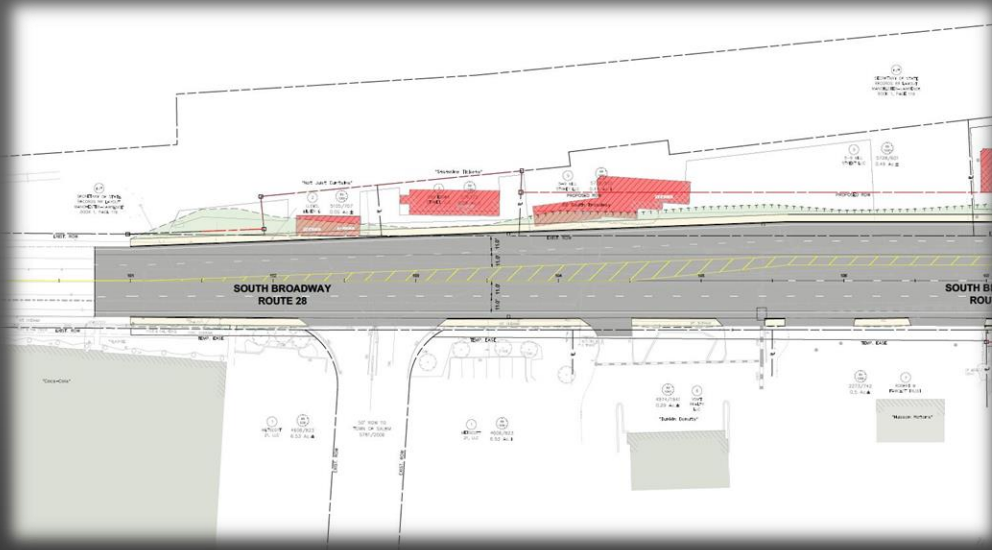
DEPOT PROJECT UPDATE



FINAL DESIGN – PROPOSED IMPROVEMENTS



DEPOT PROJECT UPDATE





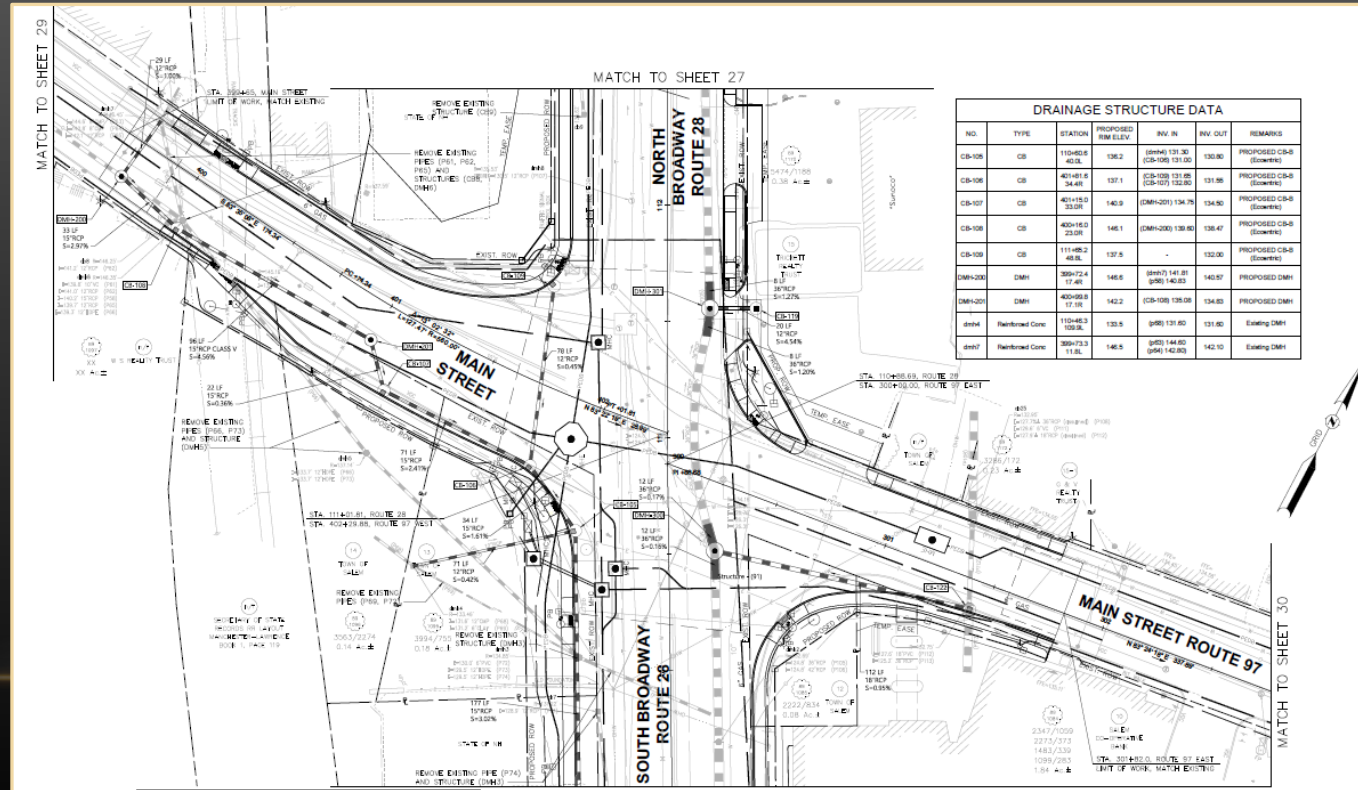
UTILITY POLE LOCATIONS

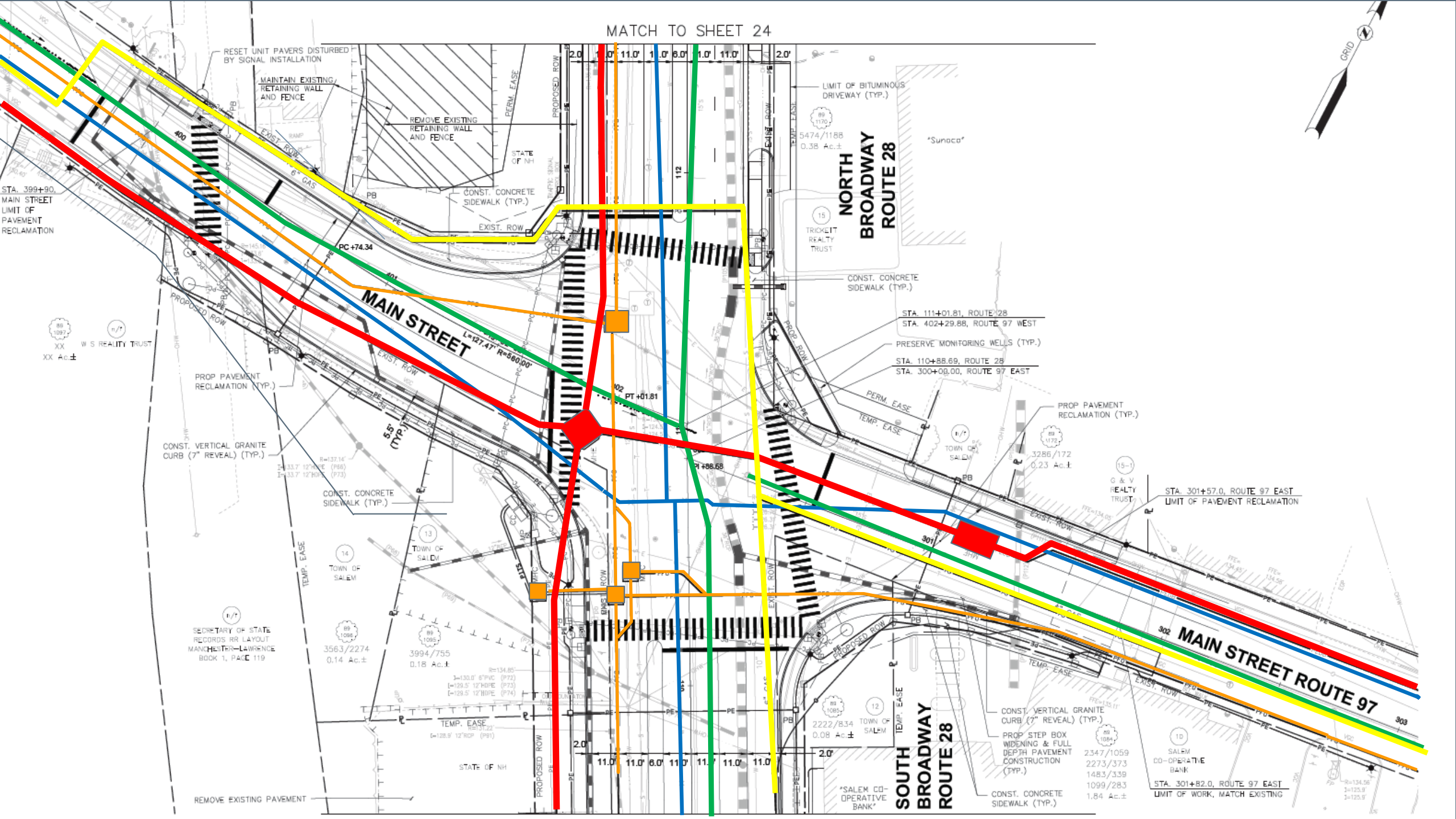


DEPOT PROJECT UPDATE



UTILITY COORDINATION





RESET UNIT PAVERS DISTURBED BY SIGNAL INSTALLATION

MAINTAIN EXISTING RETAINING WALL AND FENCE

REMOVE EXISTING RETAINING WALL AND FENCE

CONST. CONCRETE SIDEWALK (TYP.)

LIMIT OF BITUMINOUS DRIVEWAY (TYP.)

NORTH BROADWAY ROUTE 28

"Sunoco"

5474/1188
0.38 Ac.±

15
TRICKETT REALTY TRUST

CONST. CONCRETE SIDEWALK (TYP.)

STA. 111+01.81, ROUTE 28
STA. 402+29.88, ROUTE 97 WEST

PRESERVE MONITORING WELLS (TYP.)

STA. 110+88.69, ROUTE 28
STA. 300+08.00, ROUTE 97 EAST

PROP PAVEMENT RECLAMATION (TYP.)

3286/172
0.23 Ac.±

15-1
G & V REALTY TRUST

STA. 301+57.0, ROUTE 97 EAST
LIMIT OF PAVEMENT RECLAMATION

MAIN STREET

EXIST. ROW

CONST. CONCRETE SIDEWALK (TYP.)

14
TOWN OF SALEM

13
TOWN OF SALEM

SECRETARY OF STATE RECORDS RR LAYOUT MANCHESTER-LAWRENCE BOOK 1, PAGE 119

3563/2274
0.14 Ac.±

3994/755
0.18 Ac.±

R=134.85
L=130.0' 5" PVC (P72)
L=129.5' 12" HPIRE (P73)
L=129.5' 12" HPIRE (P74)

TEMP. EASE
128.9' 12" ROP (P91)

STATE OF NH

2222/834
0.08 Ac.±

12
TOWN OF SALEM

SOUTH BROADWAY ROUTE 28

CONST. VERTICAL GRANITE CURB (7" REVEAL) (TYP.)
PROP STEP BOX WIDENING & FULL DEPTH PAVEMENT CONSTRUCTION (TYP.)

2347/1059

2273/373

1483/339

1099/283

1.84 Ac.±

CONST. CONCRETE SIDEWALK (TYP.)

10
SALEM CO-OPERATIVE BANK

STA. 301+82.0, ROUTE 97 EAST
LIMIT OF WORK, MATCH EXISTING

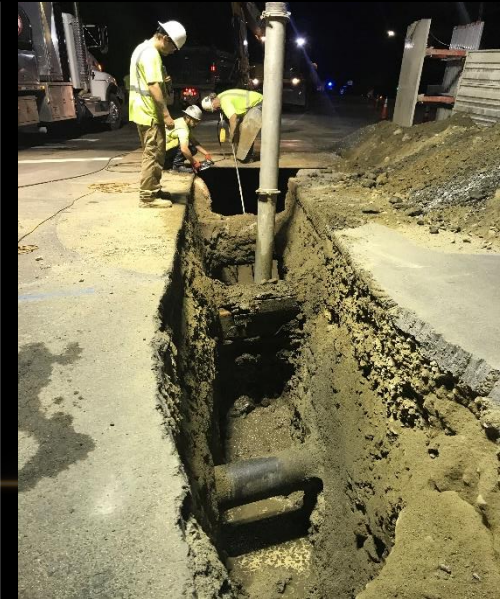
MAIN STREET ROUTE 97

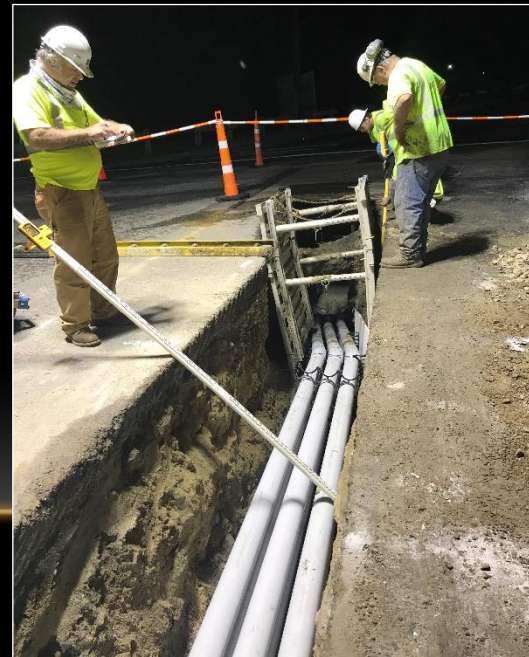
302

303

REMOVE EXISTING PAVEMENT









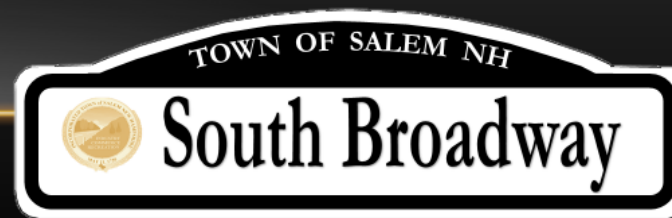
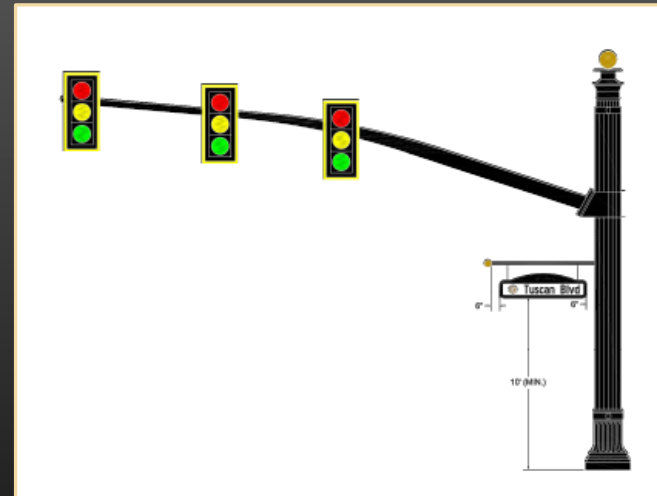
DEPOT PROJECT UPDATE



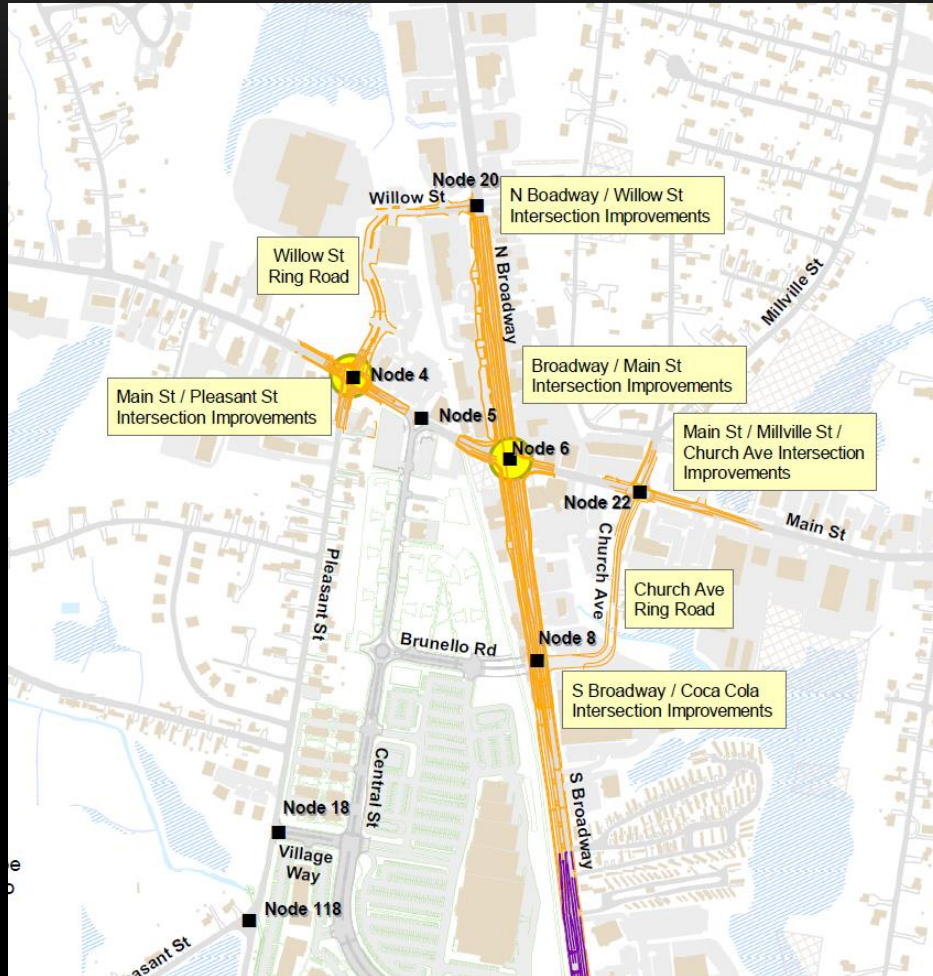
DEPOT PROJECT UPDATE



PROJECT DESIGN ELEMENTS



AREA IMPROVEMENTS



TRANSPORTATION IMPROVEMENTS

- Depot Intersection
- Main/Pleasant Intersection
- Ring Roads



AREA IMPROVEMENTS



TUSCAN TRANSPORTATION IMPROVEMENTS

- Mall Road
- Rockingham Park Blvd
- RT 28 Corridor
 - Brookwood Drive to ~ Cluff Crossing





PROJECT INFORMATION

- TOWN CONTACT: James Danis, PE, 603-890-2038, jdanis@salemnh.gov
- TOWN CONSULTANT: McFarland Johnson, Brian Colburn and Matt Moore
- TOWN CONTRACTOR: LEC, John Gaudette

ADDITIONAL INFORMATION:

- Town of Salem website, www.salemnh.org
 - Biweekly Updates and Project Schedule
- Roy E Sorenson, Municipal Services Director
- Lyndsay Butler, Project Engineer

DEPOT PROJECT UPDATE