



SALEM MUNICIPAL SERVICES



ENGINEERING ♦ PUBLIC WORKS ♦ UTILITIES



DEPOT PROJECT UPDATE

April 20, 2020

DEPOT INTERSECTION PROJECT



FHWA

NHDOT

SALEM

VHB

- ROW
- Demolition
- Final Design
- Exclusive left turn lanes on RT 28
- New Traffic Signals, Street Lighting
- Drainage Improvements
- Reconstruct Sidewalks
- Underground Utilities

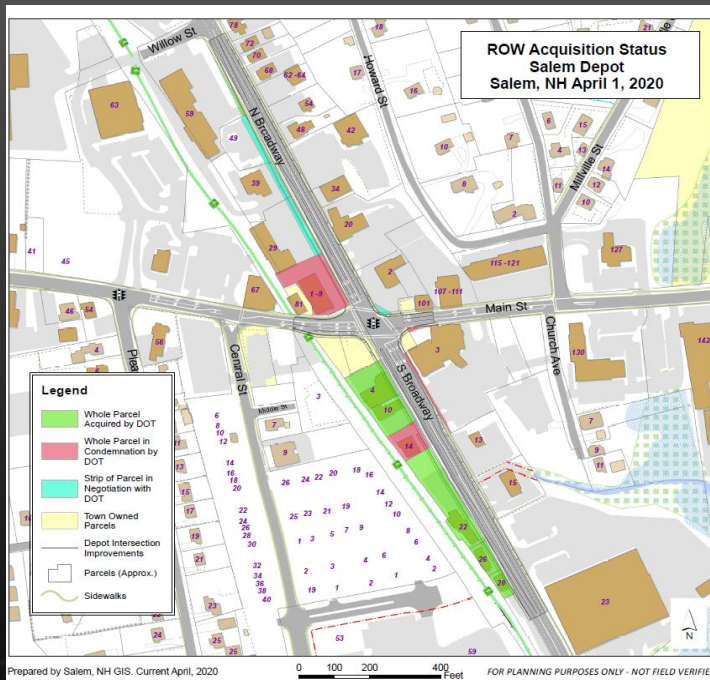


SALEM MUNICIPAL SERVICES

DEPOT PROJECT UPDATE



ROW – RIGHT OF WAY



- Strip ROW Acquisitions:
 - 59 N. Broadway (Dodge Grain) = acquired 11/2019
 - 2 S. Broadway (Town Owned) = donated 02/2020
 - 1 S. Broadway (Town Owned) = donated 02/2020
 - 90 Min St (Town Owned) = donated 02/2020
 - 3 S. Broadway (Salem Co-Op Bank) = in condemnation process
 - 2 N. Broadway (Sunoco Station) = negotiation not yet complete
 - 29, 39, & 49 N. Broadway (Sal's/Lupoli) = negotiation not yet complete
- Temporary Construction Easements along the east side of N. Broadway have been acquired.
- 22 entities have been relocated. NHDOT is still processing some of the relocation claims and there could be others that surface over the next 18 months.
- Three acquisitions are in the condemnation process.
 - Daisy Cleaners
 - Salem Co-Operative Bank
 - 1-9 N. Broadway (Core Gaming)

DEPOT PROJECT UPDATE



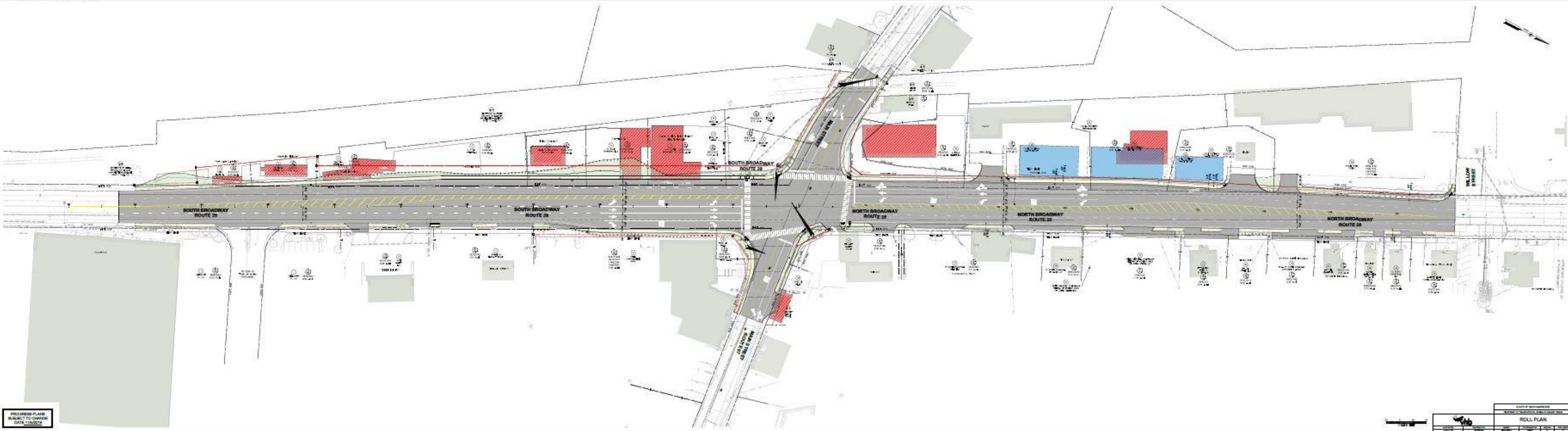
BUILDING DEMOLITION

- NHDOT has allowed the Town to bid out building demolition in advance of construction
- Bid documents have been submitted to NHDOT for final review and approval – Expect to receive authorization to advertise for bidding week of April 27th
- Anticipate four week bid period
- Bid opening and award end of May
- Demolition to begin mid-June

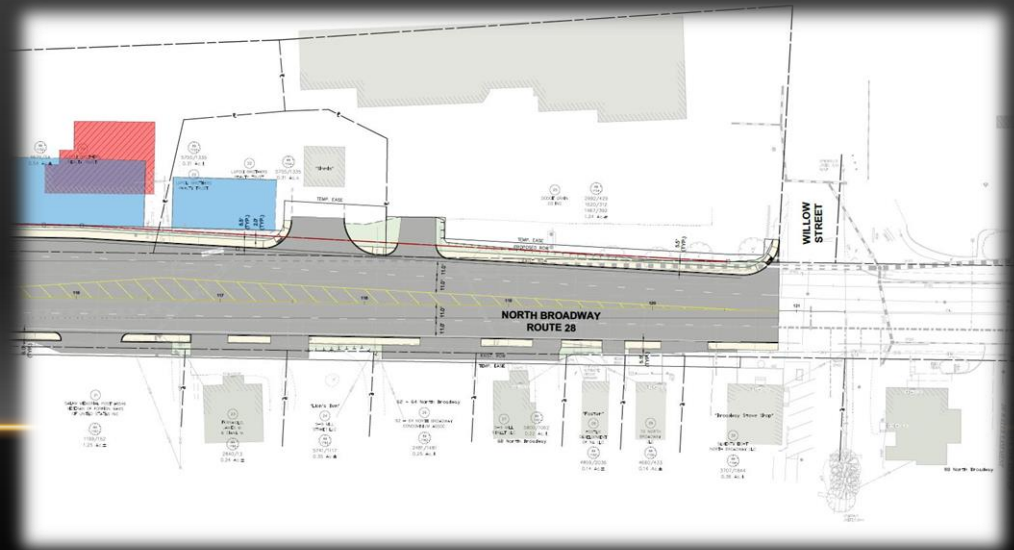
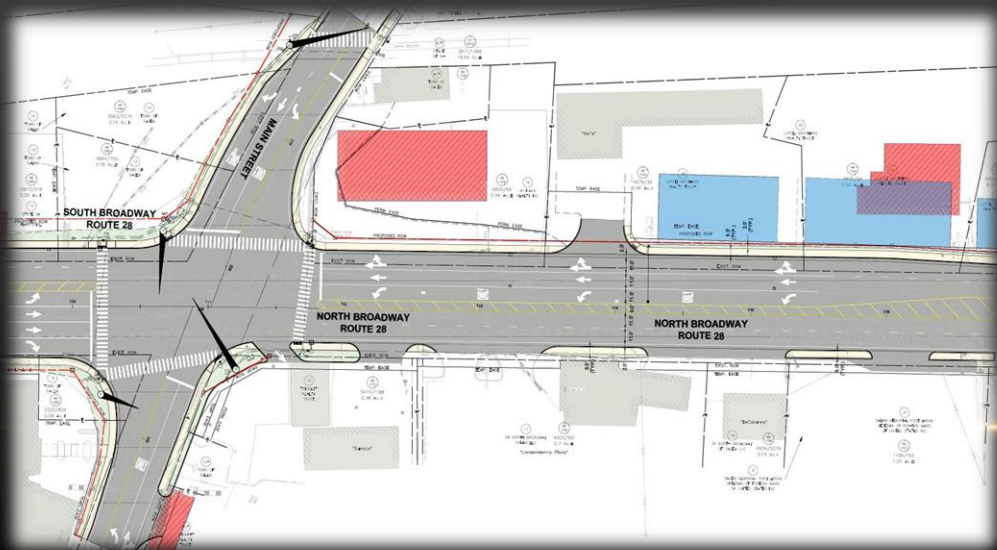
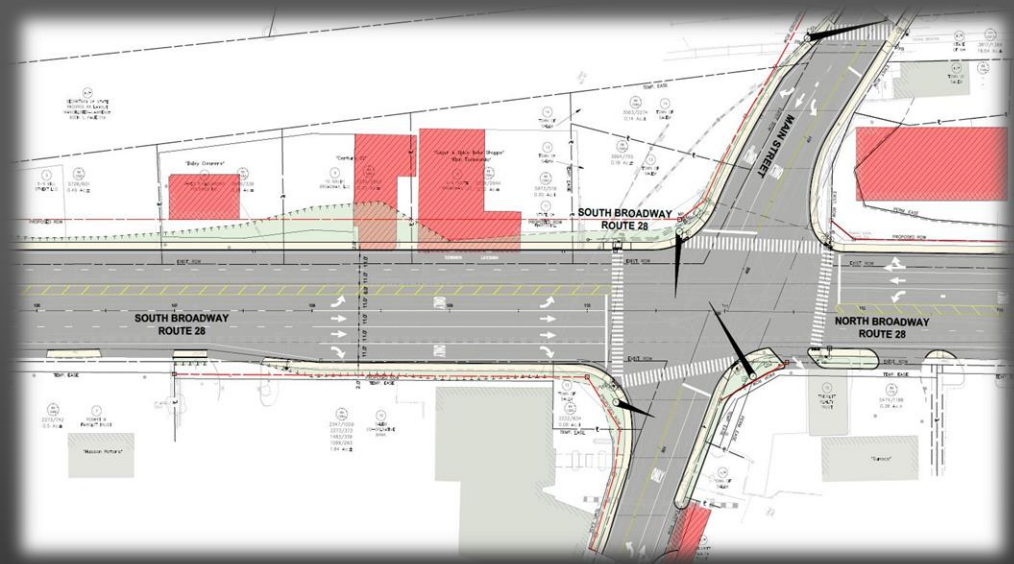
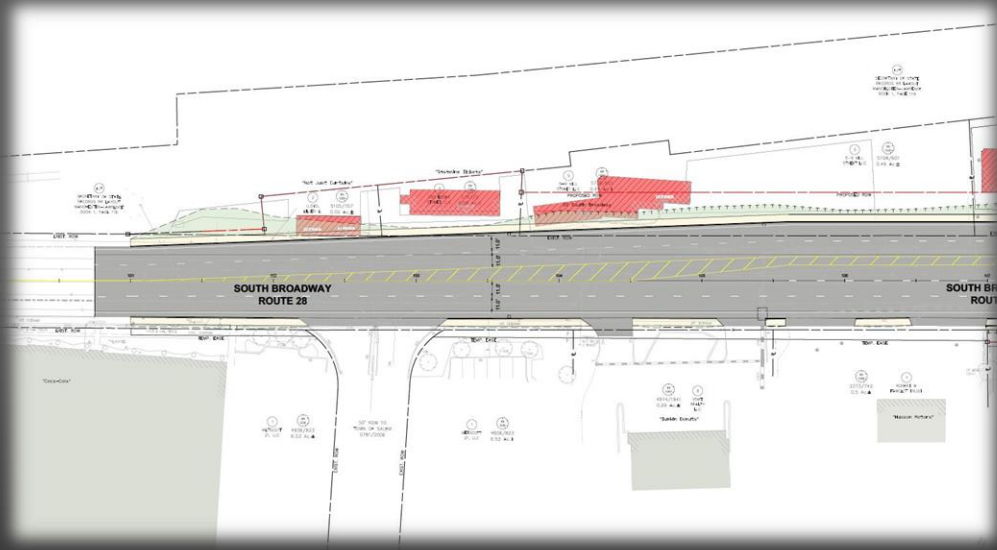
DEPOT PROJECT UPDATE



FINAL DESIGN – PROPOSED IMPROVEMENTS



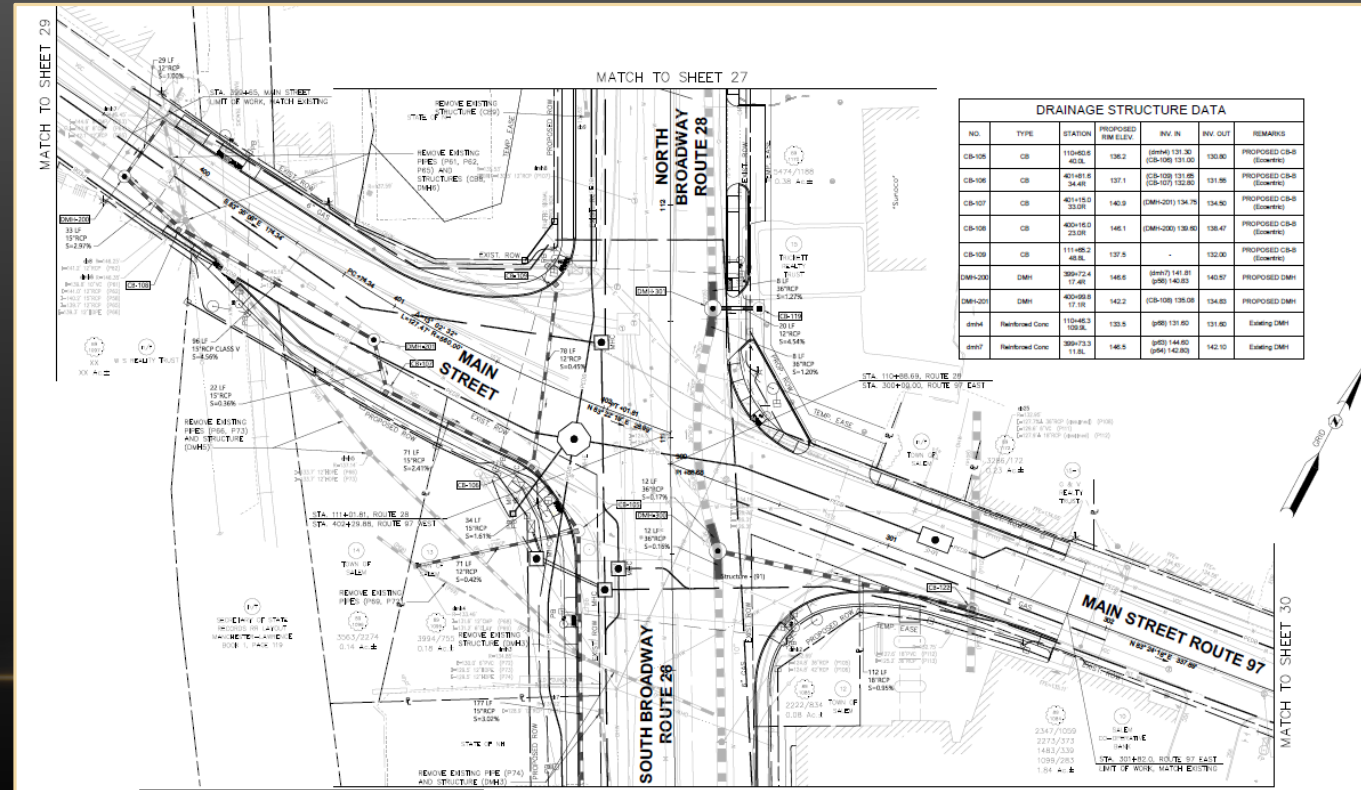
DEPOT PROJECT UPDATE

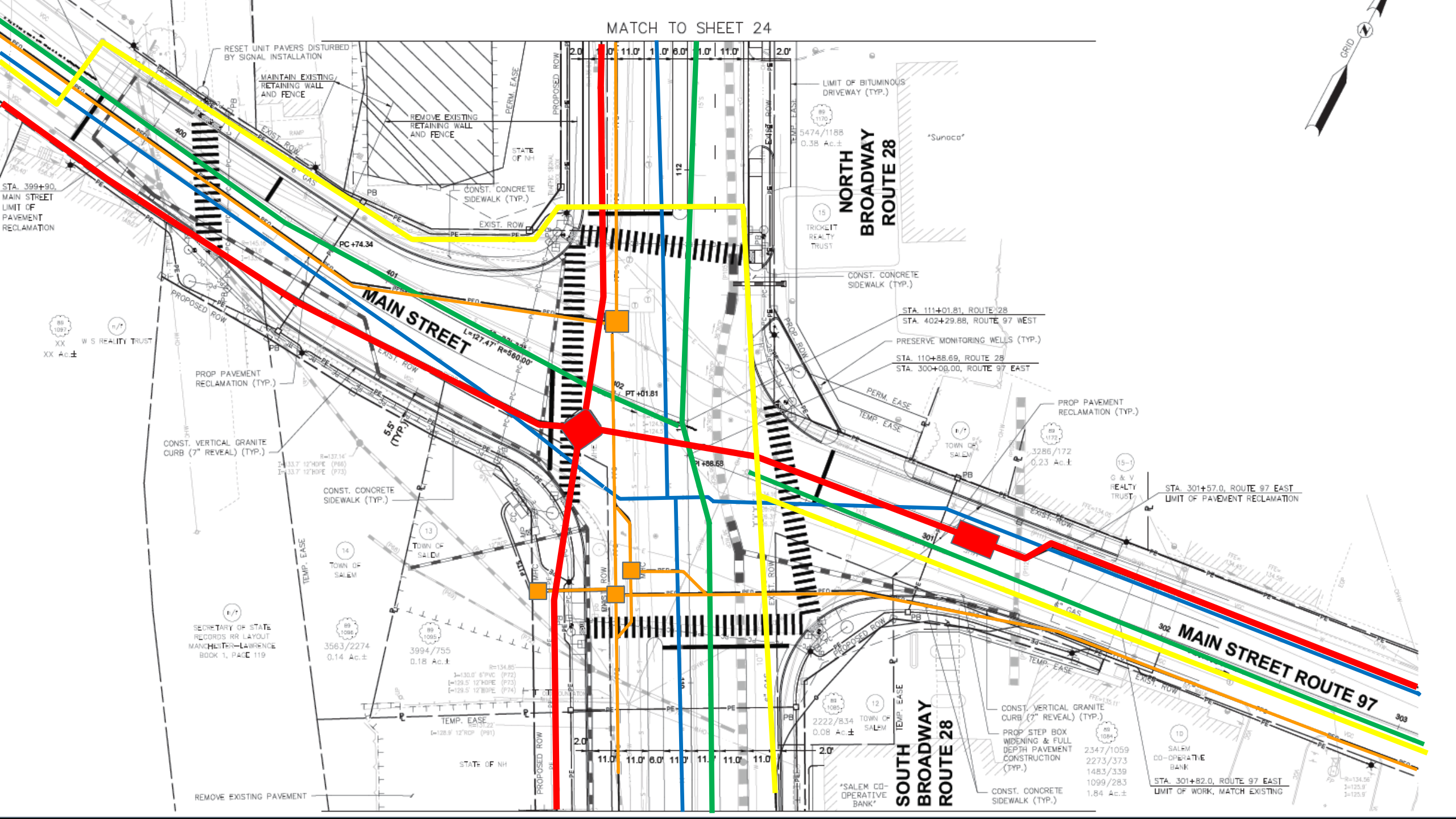


DEPOT PROJECT UPDATE



UTILITY COORDINATION





STA. 399+90,
MAIN STREET
LIMIT OF
PAVEMENT
RECLAMATION

88
1097
XX
W S REALTY TRUST
XX Ac.±

PROP PAVEMENT
RECLAMATION (TYP.)

CONST. VERTICAL GRANITE
CURB (7" REVEAL) (TYP.)

14-33.7 12"HOPE (P85)
14-33.7 12"HOPE (P83)

1/7
SECRETARY OF STATE
RECORDS RR LAYOUT
MANCHESTER-LAURENCE
BOOK 1, PAGE 119

CONST. CONCRETE
SIDEWALK (TYP.)

14
TOWN OF
SALEM

89
1086
3563/2274
0.14 Ac.±

89
1085
3994/755
0.18 Ac.±

TEMP. EASE
12-22'
(=128.9' 12"ROP (P91))

STATE OF NH

REMOVE EXISTING PAVEMENT

RESET UNIT PAVERS DISTURBED
BY SIGNAL INSTALLATION

MAINTAIN EXISTING
RETAINING WALL
AND FENCE

REMOVE EXISTING
RETAINING WALL
AND FENCE

CONST. CONCRETE
SIDEWALK (TYP.)

EXIST. ROW

EXIST. ROW

EXIST. ROW

EXIST. ROW

EXIST. ROW

EXIST. ROW

EXIST. ROW

EXIST. ROW

EXIST. ROW

EXIST. ROW

EXIST. ROW

EXIST. ROW

EXIST. ROW

EXIST. ROW

EXIST. ROW

EXIST. ROW

EXIST. ROW

EXIST. ROW

EXIST. ROW

PROPOSED ROW
2.0'
11.0'
11.0'
6.0'
11.0'
11.0'
11.0'
11.0'
2.0'

PROPOSED ROW
2.0'
11.0'
11.0'
6.0'
11.0'
11.0'
11.0'
11.0'
2.0'

PROPOSED ROW
2.0'
11.0'
11.0'
6.0'
11.0'
11.0'
11.0'
11.0'
2.0'

PROPOSED ROW
2.0'
11.0'
11.0'
6.0'
11.0'
11.0'
11.0'
11.0'
2.0'

PROPOSED ROW
2.0'
11.0'
11.0'
6.0'
11.0'
11.0'
11.0'
11.0'
2.0'

PROPOSED ROW
2.0'
11.0'
11.0'
6.0'
11.0'
11.0'
11.0'
11.0'
2.0'

PROPOSED ROW
2.0'
11.0'
11.0'
6.0'
11.0'
11.0'
11.0'
11.0'
2.0'

PROPOSED ROW
2.0'
11.0'
11.0'
6.0'
11.0'
11.0'
11.0'
11.0'
2.0'

PROPOSED ROW
2.0'
11.0'
11.0'
6.0'
11.0'
11.0'
11.0'
11.0'
2.0'

PROPOSED ROW
2.0'
11.0'
11.0'
6.0'
11.0'
11.0'
11.0'
11.0'
2.0'

PROPOSED ROW
2.0'
11.0'
11.0'
6.0'
11.0'
11.0'
11.0'
11.0'
2.0'

PROPOSED ROW
2.0'
11.0'
11.0'
6.0'
11.0'
11.0'
11.0'
11.0'
2.0'

PROPOSED ROW
2.0'
11.0'
11.0'
6.0'
11.0'
11.0'
11.0'
11.0'
2.0'

PROPOSED ROW
2.0'
11.0'
11.0'
6.0'
11.0'
11.0'
11.0'
11.0'
2.0'

PROPOSED ROW
2.0'
11.0'
11.0'
6.0'
11.0'
11.0'
11.0'
11.0'
2.0'

PROPOSED ROW
2.0'
11.0'
11.0'
6.0'
11.0'
11.0'
11.0'
11.0'
2.0'

PROPOSED ROW
2.0'
11.0'
11.0'
6.0'
11.0'
11.0'
11.0'
11.0'
2.0'

PROPOSED ROW
2.0'
11.0'
11.0'
6.0'
11.0'
11.0'
11.0'
11.0'
2.0'

PROPOSED ROW
2.0'
11.0'
11.0'
6.0'
11.0'
11.0'
11.0'
11.0'
2.0'

PROPOSED ROW
2.0'
11.0'
11.0'
6.0'
11.0'
11.0'
11.0'
11.0'
2.0'

PROPOSED ROW
2.0'
11.0'
11.0'
6.0'
11.0'
11.0'
11.0'
11.0'
2.0'

PROPOSED ROW
2.0'
11.0'
11.0'
6.0'
11.0'
11.0'
11.0'
11.0'
2.0'

PROPOSED ROW
2.0'
11.0'
11.0'
6.0'
11.0'
11.0'
11.0'
11.0'
2.0'

PROPOSED ROW
2.0'
11.0'
11.0'
6.0'
11.0'
11.0'
11.0'
11.0'
2.0'

PROPOSED ROW
2.0'
11.0'
11.0'
6.0'
11.0'
11.0'
11.0'
11.0'
2.0'

PROPOSED ROW
2.0'
11.0'
11.0'
6.0'
11.0'
11.0'
11.0'
11.0'
2.0'

PROPOSED ROW
2.0'
11.0'
11.0'
6.0'
11.0'
11.0'
11.0'
11.0'
2.0'

PROPOSED ROW
2.0'
11.0'
11.0'
6.0'
11.0'
11.0'
11.0'
11.0'
2.0'

PROPOSED ROW
2.0'
11.0'
11.0'
6.0'
11.0'
11.0'
11.0'
11.0'
2.0'

PROPOSED ROW
2.0'
11.0'
11.0'
6.0'
11.0'
11.0'
11.0'
11.0'
2.0'

PROPOSED ROW
2.0'
11.0'
11.0'
6.0'
11.0'
11.0'
11.0'
11.0'
2.0'

**NORTH
BROADWAY
ROUTE 28**

**SOUTH
BROADWAY
ROUTE 28**

**MAIN STREET
ROUTE 97**

LIMIT OF BITUMINOUS
DRIVEWAY (TYP.)

5474/1188
0.38 Ac.±

15
TRICKETT
REALTY
TRUST

CONST. CONCRETE
SIDEWALK (TYP.)

STA. 111+01.81, ROUTE 28
STA. 402+29.88, ROUTE 97 WEST

PRESERVE MONITORING WELLS (TYP.)

STA. 110+88.69, ROUTE 28
STA. 300+00.00, ROUTE 97 EAST

PERM. EASE

TEMP. EASE

PROP PAVEMENT
RECLAMATION (TYP.)

3286/172
0.23 Ac.±

15-1
G & V
REALTY
TRUST

STA. 301+57.0, ROUTE 97 EAST
LIMIT OF PAVEMENT RECLAMATION

CONST. VERTICAL GRANITE
CURB (7" REVEAL) (TYP.)

PROP STEP BOX
WIDENING & FULL
DEPTH PAVEMENT
CONSTRUCTION
(TYP.)

CONST. CONCRETE
SIDEWALK (TYP.)

2347/1059
2273/373
1483/339
1099/283
1.84 Ac.±

10
SALEM
CO-OPERATIVE
BANK

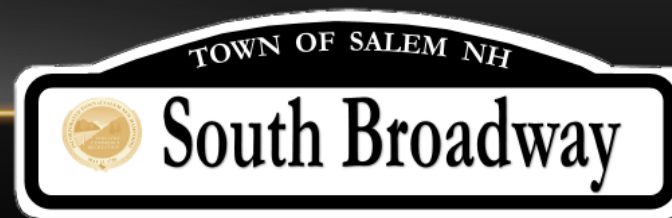
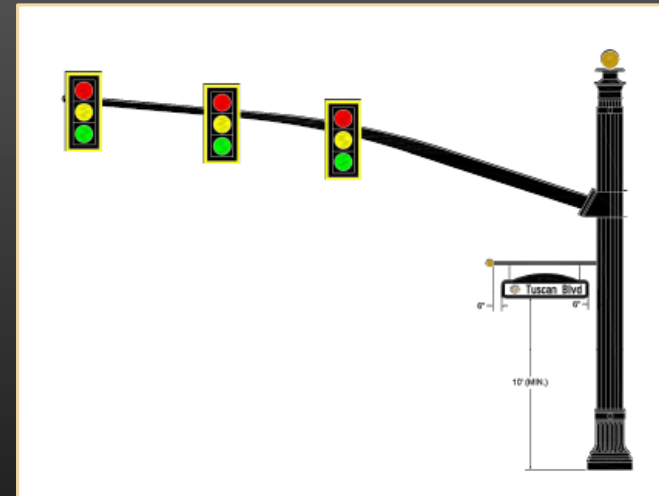
STA. 301+82.0, ROUTE 97 EAST
LIMIT OF WORK, MATCH EXISTING



DEPOT PROJECT UPDATE



PROJECT DESIGN ELEMENTS



DEPOT PROJECT UPDATE



DISCUSSION