

**Route 97 / Route 28 (Salem Depot) Intersection Improvements Project**  
**Bi-Weekly Progress Report**  
**June 8, 2021**

This report identifies the work on the Salem Depot Intersection project that Linskey Excavating, Co. has completed in the last two (2) weeks and is anticipated to be working on during the next two (2) weeks. Roads will remain open, expect delays. Officers will help you pass through the work zones. Thank you for your patience during the construction process.

**Work Completed on Salem Depot Intersection**

- The existing retaining wall between the intersection and the Chamber of Commerce was removed to allow for the future widening.
- Drainage system work continued. Drain pipe was installed from an existing manhole in the Dunking Donuts driveway approximately 180 feet to the south to service a new catch basin.



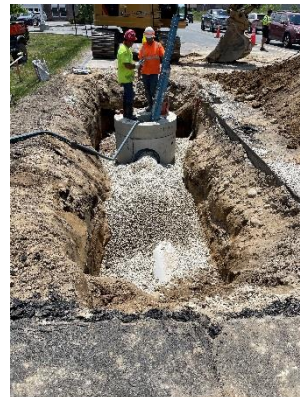
**Demolition of the existing retaining wall along the west leg of Main Street.**



**Rough grading the new slope after the removal of the retaining wall.**



**Backfilling the trench after adjusting the sewer service at Dunkin Donuts.**



**Installation of a new catch basin just south of the Dunkin Donuts driveway.**

**Next Two (2) Weeks**

- Drain pipe and catch basin installation will continue along South Broadway to service the future widening as well a new drainage crossing across Route 28 at Dunkin Donuts to connect the new drainage system on the west side to the existing on the east side.