

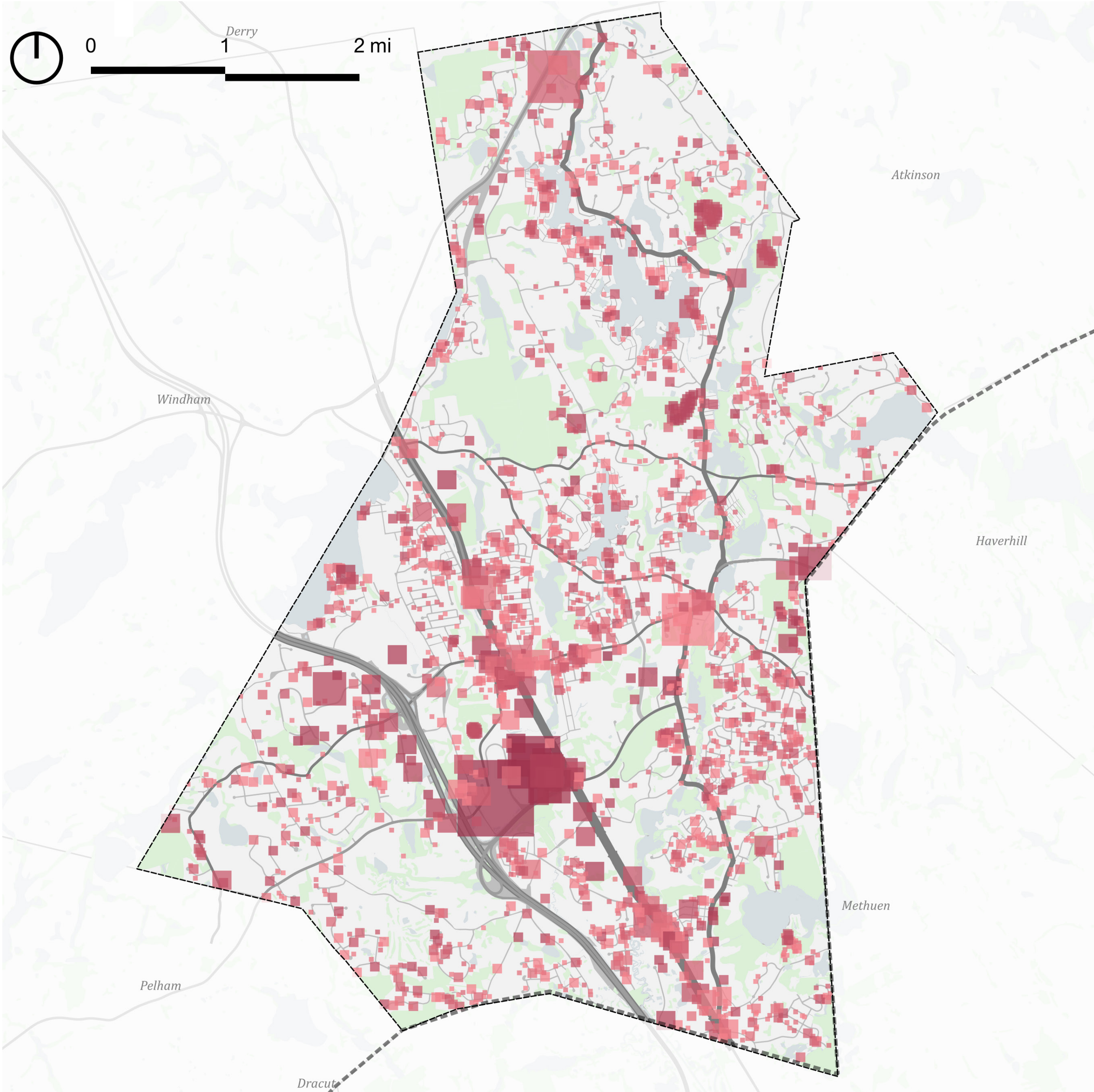
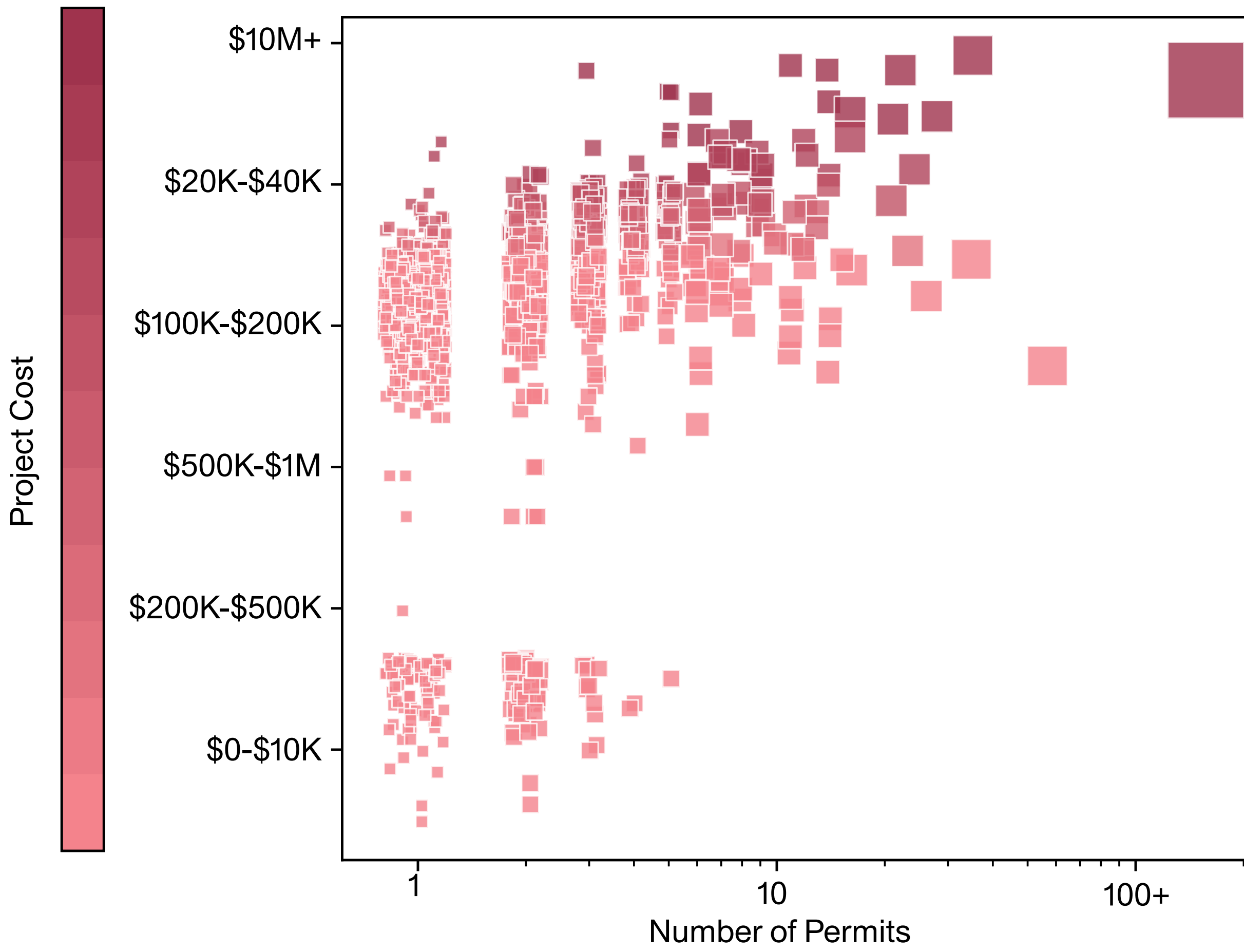
Shaping Growth



Cultivating growth in the right places

There has been a lot of investment in Salem recently, concentrated in certain parts of town.

Number (scaled by color) and cost (scaled by size) of building permits (2020-2024) by parcel.



Where should Salem Grow?

There are some places that are not well-suited to growth because they lack sewer infrastructure and/or are conservation areas where development is prohibited or very limited. These areas are darkened in the map here.

Place a dot in places where you think Salem should focus future growth.

- Neighborhood corridors
- Rail trail: complete
- Rail trail: incomplete
- Sidewalk: existing
- Sidewalk: proposed
- restricted growth areas (wetlands + no sewer access)
- vacant parcels (outside restricted growth areas)

